

BOERhier VEILINGS


'n Boer is gekies deur God

GRATIS

Uitgawe 57

5 Februarie 2026

www.boerhier.co.za



Agri Solsec: Solar Farm Security

**Hoe beskerm ek my kudde teen
Bek-en-Klouseer (BKS)?**

**Good nutrition, the cornerstone of
profitable livestock farming**

**BIG NEWS for South African Farmers: Design Biologix
Named Sole Agent for Biogénesis Bagó's FMD Vaccine**

**Waarom baie boere in Suid-
Afrika met Angus-beeste boer**

Contents

- 5** Waaron baie boere in Suid-Afrika met Angus-beeste boer

- 10** 49ste Grtiekwaland-wes Veiling – 11 Februarie

- 11** Agri Solsec: Solar Farm Security that works when criminals don't want you watching 24/7

- 15** Link Merino's Produksieveiling – 12 Februarie

- 17** Hoe beskerm ek my kudde teen Bek-en-Klousee (BKS)?

- 21** Leehan Bonsmaras Veilings: 25 Februarie

- 22** Good nutrition, the cornerstone of profitable livestock farming

- 26** Garden Route Elite Boran Auction – 21 February

- 27** Doeltreffende Bosluis- en Uitwendige Parasietbeheer in Midsomer

- 31** Karoo Kalahari Meatmaster Groep Veiling – 25 Februarie

- 32** BIG NEWS for South African Farmers: Design Biologix Named Sole Agent for Biogénesis Bagó's FMD Vaccine

- 36** 26ste Lucasdam Veiling – 26 Februarie

- 38** Sutherland Karoo Meatmaster Klub Veiling – 19 Maart

- 39** Interne Parasietbeheer in Midsomer – 'n Volhoubare Benadering

- 44** Pothou Sussex Genetics Veiling – 11 Junie

- 45** Kyron Wildlife Veterinary Workshop 2025

- 49** Ile de France Elite SA Veiling – 19 September

- 50** Doeltreffende Weidingsbestuur tydens Midsomer

- 55** Sudden Illness, Lameness and Emergency Response in Livestock

- 61** Auction results

- 66** RECIPE: Cowboy Butter Venison Backstraps

- 67** Wat sê die MARKTE

Artikels saamgestel deur BOERhier en Zanmari Crous, AffiePlaas Fotografie, Christine Vosloo Fotografie en Crossview Photography, in samewerking met die adverteerders.

Ontwerpe en samestelling gedoen deur BOERhier.

Bemarking en kliëntediens word behartig deur BOERhier span.

Kopiereg van BOERhier word streng voorbehou.

Vir verdere navraag, kontak: [073 895 6392](tel:0738956392) of e-pos info@boerhier.co.za

Besoek ons webtuiste www.boerhier.co.za en www.farmhere.co.za

Ingligting vir advertensies en artikels vir BOERhier word verskaf deur adverteerders.

BOERhier word gevrywaar van enige verliese of beserings wat kan plaasvind. Lesers word aanbeveel om navorsing te doen voordat 'n transaksie behartig word en 'n produk gebruik word.



Click on this icon for the Index page



Click on this icon to watch a video



Click on this icon for more information links



Photo: Crossview Photography

Redakteursnota



Om Nederigheid en Hoop Lewendig te Hou in Moeilike Tye

Oor ons lande, ons gesinne en ons land heen, bevind baie van ons ons in seisoene wat ons nooit verwag het nie. Droogte, siekte, finansiële druk, onsekerheid en uitputting het bekende metgeselle geword. In tye soos hierdie is dit maklik om oorweldig te voel of om te probeer om die las alleen te dra. Tog herinner geskiedenis — en geloof — ons daaraan dat krisisse dikwels die grond is waarin nederigheid en hoop die diepste wortel skiet.

Die Skrif roep ons eerstens tot nederigheid, nie as swakheid nie, maar as oorgawe. “Verneder julle voor die Here, en Hy sal julle verhoog” (Jakobus 4:10, NLV). Wanneer ons erken dat ons nie al die antwoorde het nie, maak ons ruimte vir God om ons te lei met wysheid wat ons eie verstand te bowe gaan.

Hoop volg op nederigheid wanneer ons kies om te vertrou eerder as om te vrees. “Vertrou op die Here met jou hele hart en moenie op jou eie insig staatmaak nie. Ken Hom in alles wat jy doen, en Hy sal jou paaie reguit maak” (Spreuke 3:5–6, NLV). Boerdery leer ons geduld — saaityd kom altyd voor oestyd — en geloof leer ons dieselfde lewensles.

Om in moeilike tye op God te steun, neem nie die stryd weg nie, maar gee ons die krag om dit te dra. Die Here belowe nuwe krag aan dié wat op Hom vertrou: “Maar dié wat op die Here vertrou, sal nuwe krag kry. Hulle sal opvaar met vleuels soos arende... Hulle sal loop en nie moeg word nie” (Jesaja 40:31, NLV).

Selfs in ons swakheid is God teenwoordig. “My genade is al wat jy nodig het. My krag kom die beste tot sy reg wanneer jy swak is” (2 Korintiërs 12:9, NLV). Wanneer ons leeg voel, bly Hy voldoende.

Mag ons, as ’n landbougemeenskap, aanhou standvastig bly — nederig in gees, hoopvol in hart — en vertrou dat God in elke seisoen getrou is.

— Redakteur, BOERhier Tydskrif

Living with Humility in Every Season of Life

Humility is one of the most consistent principles taught in Scripture, yet it is often misunderstood. Biblical humility is not weakness, self-rejection, or passivity. Rather, it is a clear, disciplined recognition of who God is, who we are, and how we are called to live—regardless of circumstances. Whether in success or hardship, leadership or service, Scripture repeatedly affirms that humility is essential for a life that honours God.

The New Living Translation describes humility as a posture of the heart that aligns a person with God's will. "God opposes the proud but gives grace to the humble" (James 4:6, NLT). This statement is factual and uncompromising: pride creates resistance between a person and God, while humility creates space for grace.

Humility begins with submission. Scripture does not separate humility from obedience. "So humble yourselves before God. Resist the devil, and he will flee from you" (James 4:7, NLT). In practical terms, humility means choosing God's authority over personal opinion, emotion, or circumstance. It applies equally in seasons of abundance and seasons of loss.

The Bible also makes it clear that humility governs how we treat others. "Don't be selfish; don't try to impress others. Be humble, thinking of others as better than yourselves" (Philippians 2:3, NLT). This instruction is not conditional. It does not depend on how others behave, whether they agree with us, or whether they treat us fairly. Biblical humility is an active decision, not a reaction.

Jesus Himself provides the clearest example. "Take my yoke upon you. Let me teach you, because I am humble and gentle at heart" (Matthew 11:29, NLT). Christ's humility was expressed through service, obedience, and sacrifice—not through withdrawal or silence. He demonstrated that humility and strength are not opposites; they operate together.

Scripture also links humility directly to wisdom. "True humility and fear of the Lord lead to riches, honor, and long life" (Proverbs 22:4, NLT). This verse does not promise material wealth as a guarantee, but it establishes a principle: humility positions a person for stability, clarity, and honour in God's timing.

In everyday life, humility affects decision-making, conflict resolution, leadership, and perseverance. "Live in harmony with each other. Don't be too proud to enjoy the company of ordinary people" (Romans 12:16, NLT). This instruction is particularly relevant in work, family, and community life, where pride often escalates division and humility restores peace.

Finally, Scripture reminds us that humility is not self-generated—it is sustained by God. "Humble yourselves under the mighty power of God, and at the right time he will lift you up in honor" (1 Peter 5:6, NLT). Humility trusts God with outcomes, timing, and recognition.

In every situation—success or struggle, certainty or uncertainty—biblical humility remains constant. It anchors a believer in truth, preserves integrity, and keeps the heart aligned with God. Humility is not situational; it is foundational.

Waarom baie boere in Suid-Afrika met **Angus-beeste** boer

In die Suid-Afrikaanse beesbedryf geniet die Angus-ras sedert meer as 'n eeu 'n uitstaande reputasie as een van die gewildste vleisbeesrasse. Angus, ook bekend as Aberdeen Angus, is oorspronklik in Skotland ontwikkel en is sedert die laat 1800's in Suid-Afrika gevestig – die eerste diere is in 1895 ingevoer.

Die kernrede waarom boere Angus kies, lê in die ras se uitnemende vleiskwaliteit, markvraag, genetiese eienskappe en bestuursvoordele. Hierdie eienskappe maak dit 'n ideale keuse vir kommersiële vleisproduksie én vir stoelteelt.

Karaktereienskappe van Angus-beeste

1. Vleis- en karkaskwaliteit

Angus-beeste is wêreldwyd sinoniem met top-kwaliteit vleis – spesifiek vleis met uitstekende marmering, sappigheid en sagte tekstuur. Marmering verwys na die intramuskulêre vet wat deur die spier versprei is en 'n deurslaggewende faktor is vir smaak en malsheid.

Die hoë marmeringsvlakke verbeter nie alleen frisheid en geur tydens bereiding nie, maar verhoog ook die algehele markwaarde van die beesvleis – beide plaaslik en internasionaal. Omdat die ras se genetika marmering bo-gemiddeld bevorder, kan boere gereeld vleis produseer wat voldoen aan premium markstandaarde.

2. Goeie biologiese kenmerke

Angus-koeie staan bekend vir gemaklike aflewering (calving



©John Boule

ease) en sterk moederinstinkte, wat lei tot hoër kalf-oorlewingsyfers.

Die ras se homoosigotiese polled-eienskap beteken dat die beeste van nature poenskap is, wat risiko's verlaag en hantering vergemaklik.

Ander voordelige eienskappe sluit in:

- Hoë vrugbaarheid en voortplantingsyfers
- Effektiewe voeromsetting
- Vroeë volwassenheid en vinnige gewigstoename
- Rand-opbrengs of "dressing percentage" wat bo die gemiddelde lê

- Gewilligheid om op plaaslike weiding te presteer

Hierdie genetiese voordele beteken dat beeste goedkoper kan groei en vroeg verkoopbaar is, wat ekonomiese wins vir die boer verhoog.

Bestuursvereistes vir kwaliteit Angus "

Om suksesvol moeite met Angus-beeste te boer, moet boere nie net kies vir goeie genetika nie – die produksiestelsel, weidingbestuur en infrastruktuur speel 'n kritieke rol:

1. Hoë kwaliteit weiding en voerbestuor

Om maksimum marmering en opbrengs te verseker, moet boere fokus op weidingbeheer, byvoeding tydens droë periodes, en voldoende minerale- en proteïenbronne. Tipies word Angus-beeste in grasgebaseerde stelsels aangehou, maar sal wyn-afwerking in voerkrale of kraal-fase help om resultate te optimaliseer.

2. Gesondheids- en parasietbeheer

Proaktiewe siekte-beheer – insluitend entings, deurlopende parasietbeheer en vee-hanteervaardighede – is belangrik om kuddegesondheid en -produksie te handhaaf. Sterk gesondheidsprogramme verminder stres en verbeter groei- en karkasresultate.

3. Betroubare infrastruktuur

Hierdie sluit in:

- Veilige en doeltreffende hanteerfasiliteite
- Betroubare drinkwater en weidingsekuriteit
- Geskikte kraal- en skeidings
- Vervoer en verkoopsinfrastruktuur

Betere infrastruktuur maak hantering makliker, verminder stres op diere, en verbeter vlees- en genetiese resultate.

Beste streke vir Angus-boerdery in Suid-Afrika

Alhoewel Angus relatief buigsaam is, presteer die ras veral goed in koeler en hoër reënvalgebiede – hierdie omgewings bevorder weidinggroei en vee-welstand sonder extreme hitte-stress.

Belangrike streke sluit in:

- Hoëveld van KwaZulu-Natal
- Oos-helle van Mpumalanga
- Gedeeltes van die Oos en Wes-Kaap

- Oos- en Sentraal-Vrystaat

Hierdie streke het histories Anhangu-boerdery gevestig weens bevredigende weiding, koeler winters en geskikte somerreënval. Angus is egter nie uitsluitlik tot hierdie streke beperk nie – dit kan aangepas word na verskeie klimaatstoestande met goeie bestuurspraktyke.

Mark- en ekonomiese voordele

Angus-beeste se genetiese reputasie dra by tot 'n stabilisering van markpryse wat bo die gemiddelde vir ander vleisbeesrasse lê. Die mark se vraag na premium vleis beteken dat boere dikwels hoër opbrengste per kilogram karkas kan ontvang as standaard vleisbeeste.

Verder is daar toenemende belangstelling by verbruikers vir vleis wat vry van hormoonbevorderaars, natuurlik geproduseer en goed gemarmer is – faktore wat Angus-beesvleis se markposisie verder versterk.

Samevatting

Angus-beeste se gewildheid by Suid-Afrikaanse boere is nie toevallig nie. Die ras se superieure vleiskwaliteit, genetiese voordele, markwaarde en aanpasbaarheid maak dit 'n ideale keuse vir boerdery wat op winste en kwaliteit gemik is. Om hierdie voordeel te benut, vereis deeglike weidingbestuur, gesondheidstelsels, en infrastruktuur wat volhoubare produksie ondersteun. Met die regte omstandighede en bestuur, kan Angus-beeste boere help om top-kwaliteit vleisprodukte te vervaardig wat in plaaslike én internasionale markte waardeer word.

Koste- en Opbrengs-analise: Angus-boerdery in Suid-Afrika (tipiese voorbeeld)

Let wel: Pryse verskil per streek, seisoen en marktoestande. Hierdie syfers is riglyne gebaseer op kommersiële toestande vir 2025/2026.

1. Jaarlikse kostes per koei (teelkudde)

| Item | Gemiddelde koste per koei per jaar (R) |
|---|--|
| Weiding & byvoeding (lekke, wintervoer) | R2 200 – R3 500 |
| Minerale & spoorelemente | R250 – R450 |
| Gesondheidsprogram (inentings, dip, parasietbeheer) | R300 – R600 |
| Teelbul-koste (afgeskryf) | R500 – R900 |
| Arbeid & bestuur | R400 – R700 |
| Infrastruktuur & instandhouding | R300 – R600 |
| Verliesrisiko (sterftes, nie-dragtigheid) | R200 – R400 |
| Totale jaarlikse koste per koei | R4 150 – R7 150 |

2. Produksie: Wat lewer 'n Angus-koei?

Gemiddeld:

- Dragtigheidsyfer: 85 – 92%
- Speengewig: 220 – 260 kg
- Kalf ouderdom by speen: ± 6–7 maande

3. Inkomste uit speenkalwers

Huidige mark (gemiddeld):

- Speenkalfprys: R38 – R48/kg (Angus kry dikwels premie)
- Tipiese speenkalf: 240 kg × R42/kg = R10 080 per kalf
- Indien 90% kalfpersentasie:
- 1 koei lewer gemiddeld 0.9 kalf per jaar

Inkomste per koei:

- R10 080 × 0.9 = R9 072

4. Bruto wins per koei per jaar

Berekening

- Inkomste: ± R9 000 – R11 000

- Koste: ± R4 500 – R7 000
- Bruto marge: R3 000 – R5 500 per koei per jaar

Dit is uitstekend vir 'n weidingsgebaseerde stelsel.

Alternatief: Voerkraal-afwerking van Angus-kalwers

Baie boere speen Angus-kalwers en voer hulle verder in 'n voerkraal vir maksimum marmering en karkaswaarde.

Tipiese voerkraalsyfers:

| Item | Waarde |
|---------------------------|---------------------|
| Inkomkoopprys speenkalf | R9 500 – R11 000 |
| Voerkoste (90–110 dae) | R3 800 – R5 200 |
| Medikasie & hantering | R250 – R400 |
| Totale koste | ± R14 000 – R16 500 |
| Slaggewig (lewende massa) | 480 – 520 kg |
| Karkasopbrengs (55–58%) | ± 265 – 300 kg |
| Slagprys Angus | R65 – R80/kg |
| Inkomste | ± R17 500 – R22 000 |

Wins per dier:

- ± R1 500 tot R5 500, afhangend van voerpryse en mark.

Waarom Angus meer winsgewend is as baie ander rasse

1. Hoër speenkalfpryse Angus-kalwers trek premie weens genetiese reputasie en vleisgehalte.
2. Beter voeromsetting Minder voer per kilogram groei.
3. Hoër karkasgraderings Meer A- en AB-karkasse, beter marmering, beter uitslagpersentasie.
4. Laer verliese Makliker kalwing, sterk kalwers, beter oorlewingsyfers.
5. Sterk markvraag Restaurants, slaghuise en uitvoermarkte soek doelbewus Angus-vleis.



© Wayne Southwood

Breek-euwe punt (Break-even)

Om net gelyk te breek op 'n speenkalf:

Gestel:

- Jaarlikse koste per koei: R6 000
- Dragtigheid: 90%
- Speengewig: 230 kg
- Dan moet prys wees:
- $R6\ 000 \div 0.9 \div 230\ kg$
- = ± R29/kg
- Enige prys bó R29/kg beteken wins.

Angus verkoop tipies R38–R48/kg, dus is die veiligheidsmarge uitstekend.

Beste streke vir maksimum wins met Angus

Angus presteer optimaal waar:

- Hoë kwaliteit natuurlike weiding voorkom
- Sommerreënval betroubaar is
- Temperature nie ekstreme hitte veroorsaak nie

Top streke:

- Oos-Vrystaat
- Mpumalanga Hoëveld
- KwaZulu-Natal Midlands
- Oos-Kaap hoër reënvalsones
- Suid-Kaap (weidingsplase)

Hier bereik Angus hul genetiese potensiaal die beste, wat lei tot:

- Hoër speengewigte



- Beter marmering
- Laer bestuurskoste

Slot

Angus-boerdery is nie net 'n keuse vir vleisgehalte nie, maar 'n sakebesluit. Met goeie bestuur kan 'n boer:

- R3 000 – R5 500 per koei per jaar maak
- Bykomend R1 500 – R5 500 per dier in 'n voerkraal
- 'n Volhoubare, winsgewende en markgerigte stelsel bou

Dit is waarom Angus vandag as een van die mees ekonomies sinvolle vleisbeersrasse in Suid-Afrika beskou word.

BOERhier article



Quality
Matters!



Beyond the Lens, Within Your Heart



Graphic Design, website development, Social media marketing, Corporate Headshots and more.

CROSSview **Videography and photography** excels in capturing life's cherished moments with cinematic artistry. Our adept team of videographers, editors, and creatives is committed to delivering resonant visual storytelling that captivates both clients and audiences.



+27 084 810 9305

Call us for more info and more services that we offer



Some of Our Services



Wedding Videography and photography

Capturing the essence of weddings, creating enchanting videos that enclose the love, joy, and romance of the day.



Corporate Videography

Produce engaging corporate videos, including promotional videos, training materials, and event coverage.



Event Coverage

From birthdays to conferences, we provide comprehensive event videography services, ensuring no moment goes unnoticed.



Promotional Videos

Whether it's for a product, service, or cause, we create promotional videos that leave a lasting impact on your target audience.



Livestream any event

We're storytellers passionate about real-life tales. Our livestream services cover a wide range of topics and themes.



Short Films

Our creative team breathes life into imaginative concepts, crafting visually stunning short films that inspire and captivate.





VRYSTAAT

VLAKTES RALLY

ONS DOEN DIT WEER! – BETER EN GROTER!

Sluit by ons aan vir die veldry byeenkoms waar modder vlieg, bande brul en uitdagings op jou wag.

**LEWENDIGE MUSIEK,
KOSVERKOPE EN
SPELETJIES
QUARRY TOT QUARRY**

SATERDAG 7VM TOT LAAT

7 FEB.26

**UITERSTE PRET
VIR DIE HELE GESIN!**



Humansvlakte Plaasskool



Yolandi 079 286 4264

Pieter 084 030 6141

49^{STE}

GRIEKWALAND-WES VEILING

11 FEBRUARIE 2026 | 11:00

SKOUGRONDE, POSTMASBURG



100

RAMME (DORPER, WITDORPER, VAN ROOY, MEATMASTER, PERSIE, BOERBOK)

30

OOIE (DORPER, WITDORPER, VAN ROOY, MEATMASTER)

200

KOMMERSIËLE OOIE

8

BULLE (ANGUS, BONSMARA & SENEPOL)

50

KOMMERSIËLE VROULIKE DIERE (ALLE PRODUKSIESTADIA)



AANLYN BESKIKBAAR

NAVRAE

AFSLAER: KOOS COETZEE – 079 945 4355

BEMARKER: ROUX VAN DER MERWE – 082 781 3725

Agri Solsec: Solar Farm Security that works when criminals don't want you watching 24/7

South African farmers know a hard truth: crime does not follow business hours, and it doesn't wait for perfect conditions. Whether you're running cattle on extensive veld, producing grain under pivots, or managing a mixed farm with equipment spread across kilometres, farm security has become a production necessity—not a luxury.

From stock theft and trespassing to diesel theft, pump vandalism, and break-ins at workshops, the pressure on farms has increased. And the most vulnerable points are often the hardest to protect: remote gates, water points, camps far from the homestead, and off-grid infrastructure. This is exactly where Agri Solsec is changing the game with practical, solar-powered surveillance built for real farming conditions.

Who is Agri Solsec?

Agri Solsec is a South African supplier of solar-powered security and surveillance solutions, based in Schweizer-Reneke. Their focus is clear: deliver reliable, cost-effective solar camera systems that keep working even when there's no



electricity, limited infrastructure, or power interruptions.

Agri Solsec has built a strong following in the agricultural market by offering practical product ranges such as Solar PTZ cameras, trail cameras, and other security-focused equipment specifically suited for rural operations.

What is Agri Solsec used for on farms?

Agri Solsec systems are used across the farm where criminals typically target movable, valuable, and essential assets.

- Farmers commonly install Agri Solsec surveillance at:
- Kraals and night pens (livestock protection after hours)
- Handling facilities (crush pens, loading ramps, races)
- Boundary gates and access

roads (high-risk entry points)

- Boreholes, pump stations, reservoirs, and pipelines
- Diesel tanks, generators, and workshops
- Remote sheds and feed stores

Some units offer features such as motion detection, remote app monitoring, night vision, and Wi-Fi or 4G SIM connectivity—critical for areas where farm structures are far apart.

Why it has become a necessity on South African farms

When farm infrastructure fails, production doesn't just "pause"—it collapses. A stolen pump, vandalised pipeline, or stripped cables can stop water supply. Diesel theft affects planting schedules, harvesting operations,

and daily feeding routes. Stock theft impacts herd numbers, breeding plans, and cashflow.

That is why surveillance is not only about evidence after the incident—it's about prevention and early warning. Agri Solsec cameras help farmers reduce blind spots by monitoring critical points even in remote, off-grid areas, powered by solar energy instead of unreliable grid supply.

Top benefits for BOERhier readers

1. Solar-powered reliability

Agri Solsec's biggest advantage is simple: no electricity required. Systems stay active when power fails or where there is no grid connection.

2. Better farm visibility (day and night)

Many models offer night vision capability, helping farmers monitor kraals and high-risk areas during the hours criminals prefer to operate.

3. Remote monitoring via app

By using Wi-Fi or a SIM-based setup, farmers can view cameras from a phone—on the lands, at the co-op, or even while travelling.

4. Smarter detection and fewer false alarms

Certain Agri Solsec camera listings highlight AI human detection

to help reduce unnecessary notifications caused by wind, animals, or moving shadows.

5. Strong build quality for harsh conditions

Agricultural equipment must handle dust, heat, rain, and distance. Agri Solsec cameras are marketed with outdoor durability and long-range visibility in mind.

See Agri Solsec in action (Video Links)

Your BOERhier readers can watch these product demonstrations and setup guides:

👉 Agri Solsec – Steel PTZ Camera Unboxing & Setup (YouTube) <https://www.youtube.com/watch?v=THxid6l6gSU>

👉 Agri Solsec – Trail Camera Unboxing & Setup (YouTube) <https://www.youtube.com/watch?v=V7GAJyDqKp4>

👉 Agri Solsec – Mini PTZ Unboxing & Setup (YouTube) <https://www.youtube.com/watch?v=IQ1X6jaMvrs>

👉 Agri Solsec – Full Product Video (Solar Cameras) (YouTube) <https://www.youtube.com/watch?v=xZfv2QxexKg>

👉 Agri Solsec – 20X Dual Lens Camera Setup on UBox App (YouTube) <https://www.youtube.com/watch?v=2BVqvYWGnH0>

👉 AgriMag Marketplace Feature

Video (Facebook)

<https://www.facebook.com/AgriMagMarketplace/videos/801415102573480/>

👉 Agri Solsec Solar PTZ Camera 4G Demo (Facebook)

<https://www.facebook.com/Solarsecu247/videos/925313442978569/>

Where to contact Agri Solsec (Dealers / Supply in SA)

Agri Solsec (National Supply – South Africa)

- Schweizer-Reneke
- 071 202 2726
- agrisolsec@gmail.com
- Website: <https://www.agrisolsec.co.za/>

Retail Stockist Example:

- Futurama (Agri Solsec camera listings & specs)

BOERhier Bottom Line

Farming requires planning, discipline, and protection of what you've built. Agri Solsec offers farmers a security advantage that matches modern reality: off-grid solar surveillance, built for rural conditions, backed by service and practical farm-focused solutions. When visibility improves, risk drops—and that's exactly the kind of investment that protects both production and peace of mind.

BOERhier article

Complex + A&E
VIR SKAPE EN BOKKE

Complex + A&E
VIR BEESTE

DIE IDEALE BALANS VAN VITAMIENES + MINERALE

VIR OPTIMALE PRESTASIE VAN JOU KUDDE¹
OPTIMALISEER JOU DIERE SE^{2,3,4}

Immuneiteit | Ensiem funksie | Vrugbaarheid | Groei

Produk naam: Complex + A&E vir Skape en Bokke. Registrasienumer: G4119 Wet 36/1947 (Suid Afrika). Elke 1 ml bevat: Vitamien A 7 500 IU, Vitamien E 25 IU, Sink 11 mg, Selenium 0,8 mg, Mangaan 2,7 mg. Uitvoerlande: Botswana - BV2100107A [POM]; Namibië - V17/19.2/1388 [NSO]. Produk naam: Complex + A&E vir Beeste. Registrasienumer: G4120 Wet 36/1947 (Suid Afrika). Elke 1 ml bevat: Vitamien A 25 000 IU, Vitamien E 50 000 IU, Vitamien E 50 IU, Koper (Cu) 4 mg, Sink (Zn) 11 mg, Selenium (Se) 1,25 mg, Mangaan (Mn) 2,7 mg. Uitvoerlande: Botswana - BV2100106A [POM]; Namibië - V17/19.2/1389 [NSO]. Registrasienumer: Kyrón Animal Health (Edms) Bpk., Co. Reg. Nr. 2004/021847/07, Eemheid 490, 45 Parkway Street, Highway Business Park, Rooihuiskraal Uiter, 31, Cunturion, 0157, Suid Afrika.

Verwysings: [1] Callender, S.P., Mathews, J.A., Kobayashi, K. & Wang, S.D. 2017. Microemulsion utility in pharmaceuticals: Implications for multi-drug delivery. International Journal of Pharmaceutics, 528: 425-442. [2] Herd, T.H. & Hoff, B. 2011. The use of blood analysis to evaluate trace mineral status in ruminant livestock. Veterinary Clinics of North America Food Animal Practice, 27: 295-323. [3] Lopez-Alonso, M. 2012. Trace Minerals: Not too much not too little. International Scholarly Research Network Veterinary Science. doi: 10.5402/2012/704825. [4] Wahlberg, M.J. & Greher, S.P. 2006. Minerals & Vitamins for Sheep - Extension Article. available online at: <http://www.sheep101.info/201/mineralsandvitamins.html>.



Alpha Damme

www.alphadamme.co.za

BIG SALE!!!



6m x 2.3m (65KI)
R24 000



4m x 2.3m (30KI)
R17 250



8m x 2.3m (116KI)
R29 600



CINDY - 072 227 5522
RULIE - 084 690 5525



cindy@alpadamme.co.za
rulie@alpadamme.co.za

PUT YOURSELF IN OUR SHOES





20STE PRODUKSIEVEILING

12 FEB 2026

Swartkoppies
Jagersfontein

Produksieveiling om 11:00,

Ramveiling om 14H00

GPS coordinate: S 29°56,969 E 25° 29,640

AANBOD

60 horing - en poenskop / ramme / veld aangepas

750 dragtig en oop ooie

500 slyt en ou ooie

3000 hammellammers

(5 maande wol)

1000 vet slag lammers



5000 SKAAP

HOË KWALITEIT WOL | HOË VRUGBAARHEID | MOEDERSEIENSKAPPE



Piet Louw 082 551 8243 | Jannie Alexander 076 681 6168

Dennis Louw 082 717 4521 | Mario Kruger 060 522 3906




Christine Vosloo Fotografie

060 967 2041

Wes Kaap

cvosloo4@gmail.com



“Humble yourselves under the mighty power of God, and at the right time he will lift you up in honor” .

1 Peter 5:6, NLT

Photo by Christine Vosloo Photography

Hoe beskerm ek my kudde teen Bek-en-Klouseer (BKS)?

Bek-en-klouseer (BKS), internasionaal bekend as Foot-and-Mouth Disease (FMD), is een van die mees aansteeklike virussiektes wat lewendehaweprodusente wêreldwyd bedreig. In Suid-Afrika bly BKS 'n ernstige risiko vir bees-, skaap-, bok- en varkboere, veral gedurende midsomer wanneer dierebewegings, veilings en menslike verkeer op plase toeneem.

'n Enkele uitbreking kan verreikende gevolge hê: produksieverliese, streng bewegingsbeperkings, sluiting van uitvoermarkte en ernstige finansiële skade. Daarom is voorkoming, vroeë opsporing en streng biosekuriteit van kardinale belang.

Wat veroorsaak Bek-en-Klouseer?

BKS word veroorsaak deur 'n virus uit die Aphthovirus-genus (familie Picornaviridae). Die virus versprei uiters maklik deur:

- Direkte kontak tussen diere
- Lugdraende deeltjies
- Besmette voer en water
- Voertuie, toerusting en klere
- Mense wat tussen plase beweeg

Die inkubasietydperk wissel tussen 2 en 14 dae, wat beteken diere kan reeds aansteeklik wees voordat kliniese tekens sigbaar is.

Kliniese tekens waarvoor boere moet uitkyk

Vroeë herkenning is noodsaaklik. Tipiese simptome sluit in:

- Blaasvorming (vesikels) in die mond, op die tong, lippe en tandvleis
- Oormatige speekselvloei
- Letsels tussen die kloue en op die kroonrand



Lucas Ninno/Getty Images

- Kreupelheid en weiering om te beweeg
- Koors
- Skielike daling in melkproduksie
- Hoë vrektesyfers by jong diere

Enige kombinasie van hierdie tekens, veral by meer as een dier, moet as verdag vir BKS beskou word.

Biosekuriteit: Jou eerste en belangrikste verdedigingslinie

Streng biosekuriteit is die doeltreffendste manier om BKS te voorkom. Dit begin by toegangbeheer:

- Beperk besoekers tot die minimum
- Hou 'n besoekersregister
- Ontsmet voertuie, skoene en toerusting
- Voorsien aparte beskermende klere vir plaasgebruik

Persone wat veilings, ander plase of abattoirs besoek het, moet nie sonder ontsmetting met vee in aanraking kom nie.

Beheer van dierebewegings

Onbeheerste dierebewegings is een van die grootste risikofaktore vir BKS-verspreiding. Boere moet:

- Slegs diere aankoop met geldige

gesondheidsverklarings

- Alle dierebewegings permitte streng nakom
- Volledige rekords van aankope en verkope hou
- Nuwe diere vir minstens 28 dae in kwarantyn plaas
- Hierdie vereistes is wetlik afdwingbaar ingevolge die Wet op Dieriesiektes, Wet 35 van 1984.

Kwarantyn en isolasie

Elke plaas behoort 'n aangewese kwarantynarea te hê. Enige diere met verdagte simptome moet onmiddellik geïsoleer word. Geen diere, mense of toerusting mag sonder ontsmetting tussen kwarantyn- en produksiegebiede beweeg nie.

Verpligte aanmelding van verdagte gevalle

Bek-en-klouseer is 'n aanmeldbare en beheerbare siekte. Enige vermoede moet onmiddellik

aangemeld word by:

- 'n Staatsveearts
- 'n Privaatveearts
- Die plaaslike kantoor van die Department of Agriculture, Land Reform and Rural Development

Versuim om aan te meld is 'n strafbare oortreding en stel die hele bedryf in gevaar.

Entstofgebruik: streng gereguleer

Inenting teen BKS word streng deur staatsveeartsenydienste beheer en is slegs in bepaalde beheersones toegelaat. Ongemagtigde inenting is onwettig en kan Suid-Afrika se siektemonitoring en uitvoerstatus ernstig benadeel.

Samewerking beskerm die bedryf

Suid-Afrika se BKS-beheerstrategieë is in lyn met riglyne van die World Organisation for Animal Health (WOAH).

Doeltreffende beheer vereis samewerking tussen boere, veeartse en owerhede.

Slot

Bek-en-klouseer is nie net 'n plaasprobleem nie, maar 'n nasionale risiko. Deur streng biosekuriteit, verantwoordelike dierebewegings en onmiddellike aanmelding van verdagte gevalle, beskerm boere nie net hul eie kuddes nie, maar die hele Suid-Afrikaanse lewendehawebedryf.

Bronne

- Department of Agriculture, Land Reform and Rural Development (DALRRD), Suid-Afrika
- Wet op Dieriesiektes, Wet 35 van 1984
- World Organisation for Animal Health (WOAH) – Terrestrial Animal Health Code
- FAO – Foot-and-Mouth Disease Manuals

BOERhier Artikel

WATER BLADDERS & DAMLINER SOLUTIONS.



Contact details:

Simon

Tel: 082 495 7997

Email: simons@cybersmart.co.za

www.waterbladders.co.za





FOOT & MOUTH is real! BEK & KLOU is 'n realiteit!

Bio-Security is of UTMOST IMPORTANCE - Compliance is NON-NEGOTIABLE!
These protocols are crucial to protect animal health and the South African livestock economy.



MANDATORY CdP DOCUMENTS

No animals will be offloaded at an auction without a health declaration (not older than 48 hours). /
Geen diere sal by 'n veiling afgelaai word sonder 'n gesondheidsverklaring (nie ouer as 48 uur).

1. Signed CdP contract. / Getekende CdP-kontrak.
2. Health declaration form properly completed and signed by owner and veterinarians (not older than 48 hours). /
Gesondheidsverklaring behoorlik ingevul en onderteken deur eienaar en veearts (nie ouer as 48uur).
3. Document of Identification, Art. 6 (removal certificate). / Dokumente van Identifikasie, Art 6 (verwyderingssertifikaat).
4. Copy of animal Identification mark. / Afskrif van diere se Identifikasiemerk.
5. Copy of ID or company registration document, or whichever correlates with the info on the identification mark. /
Afskrif van ID of meatskappy-registrasiedokument, of wat ookal ooreenstem met identifikasiemerk (brandmerk).

Biosekuriteit is van UITERSTE BELANG - Nakoming is NIE-ONDERHALDERBAAR!
Hierdie protokolle beskerm diergesondheid en die Suid-Afrikaanse vee-ekonomie.



REQUIREMENTS FOR HUNTING PHOTOS:

Only sharp, good quality photos will be considered. Electronic photos should preferably be 1 MB in size; smaller than this cannot be posted.
Please email photos to
Santie Corbetta:
santie@wildlifehunt.co.za

JAGFOTOGALLERY

Stand a change to win this Leather Ammo Box (50 rounds)
Sponsored by Hunt Africa Leather





TROTS NOORD-KAAP – “VLEIS DEUR DIE NATUUR GROOT GEMAAK, VOLMAAK DEUR ONS PRODUSENTE.”



Tekorte van een of meer van die essensiële minerale, spoorelemente en vitamienene kan ‘n negatiewe invloed hê op u dier se prestasie.

Vandag kyk ons na Sink.

Sinktekort

- Verswakte aptyt en groeikoers
- Swak voeromsetting
- Abnormale spermatogenese
- Vertraagde testikulêre ontwikkeling
- Swak libido
- Embrio-resorpsie (dus swak konsepsiekoers)
- Wol- en haarverlies
- Skape wat eie wol vreet
- Growwe vel (parakeratose)
- Vrotpootjie
- Vitamien A-tekort



Bron: Handleiding vir voerproduksie. Riglyne vir verbetering en versoggewende voerproduksie. Tweede uitgawe. RPO. Uitgege deur Plaas Media (Lbms)pk. 2025

RPO
Noord-Kaap



Landline: +27 53 832 9595
Cell Phone: +27 67 597 1866
E-mail: RPONC@rpo.co.za
Website: rponk.co.za

Leehan



Bonsmaras

2026 Veilings:
20 Feb & 21 Aug

Moet dit nie MIS nie



Top POENSKOP Genetika

Good nutrition, the cornerstone of profitable livestock farming

Whether producing beef, mutton, milk, poultry, pork, or game, animal performance is directly linked to the quality and balance of the diet they receive. Nutrition influences growth rates, reproduction, immunity, feed conversion efficiency, carcass quality, milk yield, and overall herd or flock health. A well-fed animal is not only more productive but also more resilient to disease, stress, and environmental challenges. In today's competitive agricultural environment, correct nutritional management is no longer optional; it is a strategic investment that determines the sustainability and profitability of a farming enterprise.

Livestock require a balanced ration that supplies energy, protein, fibre, minerals, vitamins, and clean water. Energy is primarily provided by carbohydrates and fats and is essential for maintenance, growth, reproduction, and milk production. Protein supplies amino acids needed for muscle development, immune function, enzyme production, and tissue repair. Fibre is critical for rumen health in cattle, sheep, and goats, as it stimulates rumination and saliva production, maintaining proper rumen pH. Minerals such as calcium, phosphorus, magnesium, zinc,



copper, selenium, and sodium play vital roles in bone development, reproduction, immune function, and metabolic processes. Vitamins, particularly A, D, and E, support vision, fertility, immune response, and bone health.

Correct nutrition improves feed conversion ratio (FCR), meaning animals convert feed into body mass or production more efficiently. This is one of the most important profitability drivers in livestock production. When animals

grow faster, reproduce more efficiently, and experience fewer health problems, input costs per unit of production decrease while output increases. Proper nutrition also enhances carcass quality, milk solids, egg production, and wool growth, all of which directly influence market value.

Nutrition is closely linked to disease resistance. A well-balanced diet strengthens the immune system, improves gut integrity, and increases antibody

production. Animals with adequate protein and mineral levels respond better to vaccinations and are less susceptible to infections, parasites, and metabolic disorders. In contrast, nutritional deficiencies weaken immunity, making livestock more vulnerable to diseases such as mastitis, coccidiosis, parasitic infestations, respiratory infections, and reproductive disorders.

Despite its importance, achieving optimal nutrition remains one of the greatest challenges farmers face. One of the main hurdles is the rising cost of feed. Concentrates, protein supplements, mineral licks, and commercial rations have become increasingly expensive due to global grain prices, transport costs, and currency fluctuations. This places enormous pressure on farmers, particularly in extensive and small-scale systems, to balance cost with nutritional adequacy. Many farmers are forced to compromise on feed quality, which ultimately reduces animal performance and profitability.

Another major challenge is variability in forage quality. Pasture and crop residues form the backbone of most livestock feeding systems, especially in grazing-based operations. However, the nutritional value of forage fluctuates with season, rainfall, soil fertility, and management practices. During dry seasons or droughts, forage protein and energy levels decline sharply, leading to weight loss, reduced fertility, and increased mortality if supplementation is inadequate. Without regular forage analysis, farmers often underestimate the severity of nutrient deficiencies in grazing systems.

Lack of accurate ration formulation is also a limiting factor. Many farmers rely on traditional feeding practices or visual assessment rather than scientifically balanced rations. Proper ration formulation requires knowledge of nutrient

requirements, feed composition, and production stage. The nutritional needs of a lactating cow differ greatly from those of a dry cow, growing calf, or finishing animal. Similarly, breeding ewes, broilers, and layers all require stage-specific diets. Without professional feed formulation or laboratory analysis, it is easy to underfeed or oversupply nutrients, both of which reduce efficiency and increase costs.

Mineral deficiencies present a silent but serious threat to livestock productivity. In many regions, soils are naturally deficient in key trace minerals such as selenium, copper, zinc, and iodine. These deficiencies are transferred to forage and ultimately to animals. Clinical signs may be subtle, including poor growth, infertility, weak calves or lambs, suppressed immunity, and poor coat or wool quality. Without proper mineral supplementation programs, these deficiencies can persist unnoticed while continuously eroding farm profitability.

Water quality and availability are another often overlooked aspect of nutrition. Water is the most important nutrient for livestock. Poor-quality water with high salinity, contamination, or insufficient supply reduces feed intake and impairs digestion and metabolism. During heat stress, animals increase water consumption dramatically, and any limitation can result in rapid production losses and health complications.

Climate change and extreme weather patterns further complicate nutritional management. Prolonged droughts reduce pasture availability, increase feed costs, and force farmers to rely on expensive supplements. Excessive rainfall can damage grazing lands, reduce forage quality, and increase parasite burdens. These environmental

pressures make long-term nutritional planning increasingly complex and unpredictable.

Logistical and supply chain challenges also affect nutrition programs. Delays in feed deliveries, shortages of supplements, and fluctuating availability of raw materials can disrupt feeding schedules and ration consistency. Inconsistent feeding negatively impacts rumen function, growth rates, and overall performance.

Education and access to technical support remain significant hurdles. Many farmers do not have regular access to animal nutritionists, veterinarians, or laboratory services. Without professional guidance, mistakes in feed formulation, supplementation rates, and feeding strategies are common. Extension services and training programs are crucial to improving nutritional management across the industry.

Despite these challenges, investment in correct nutritional practices remains one of the most powerful tools for improving farm profitability. Regular forage testing, accurate ration formulation, strategic supplementation, and proper mineral programs can dramatically improve production efficiency. Feeding should always be aligned with the animal's production stage, whether maintenance, growth, gestation, lactation, or finishing.

Good nutrition is not simply about feeding more; it is about feeding correctly. When livestock receive balanced diets tailored to their physiological needs, the result is improved immunity, higher productivity, better reproduction, reduced veterinary costs, and superior product quality. In an industry where margins are tight and risks are high, nutrition is the foundation upon which profitable and sustainable livestock farming is built.

Source: BOERhier article

BOERhier

'n Boer is gekies deur God

We work to glorify God – with faith, impact, and passion.

- Targeted, affordable digital marketing – focused on your niche market.
- Social media management & digital strategies that amplify your voice.
- Videography, photography & editing that bring your vision to life.
- Professional, affordable livestreaming – local and international.
- Catalogue services that showcase your product range professionally.

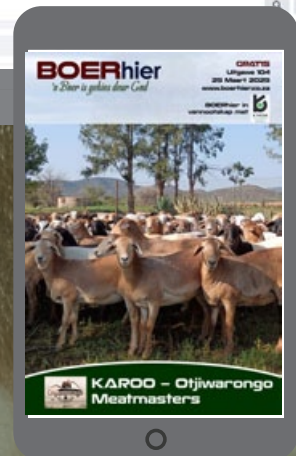
Come share your story with us.



Info@boerhier.co.za

073 895 6392

DIGITAL MARKETING WITH A PURPOSE!



www.boerhier.co.za

ECO-VET COLOSTRUM VOEDINGSAANVULLING



BREIN + LIGGAAM ONDERSTEUNING

Met bygevoegde lysine om breingesondheid, fokus en sterk spiere te ondersteun.

FOR ANIMAL USE ONLY



ECO-VET

COLOSTRUM

Reg no V23303 (ACT No36/1947)

Nutritional Supplement

WITH LYSINE

90 Gra

IMMUUNVERSTERKENDE KRAG

Ryk aan teenliggaampies om jou troeteldier se immuunstelsel te versterk en alledaagse kieme te beveg.

ALGEHELE WELSTAND WENNER

'n Daaglikse hupstoot vir dermgesondheid, vel en hare, en algehele liggaamsherstel – natuurlik effektief.

KRY JOUNE OP ONS WEBWERF VANDAG! WWW.ECOVET.CO.ZA

@ECOVETSA | WHATSAPP: 083-810-6439

Garden Route Elite Boran Auction

21 Feb 2026
Arendsrus Country Estate
George | 11:00.



MEERKAT
ONLINE AUCTIONS



- Deelnemende Telers
Participating Breeders
- Wegwyzers Fontein Borane
 - Langfontein Borane
 - Mountain View Borane
 - Roeleveld Borane
 - Opkoms Borane
 - Hanre Borane
 - Kruysrivier Borane
 - Tulpieskraal Borane
 - Three G's Borane
 - Umoja Borane
 - Yellowstone Borane

Navrae: Willem Botha (Vleissentraal) 0728684087
Christo Meyer 083 459 3936 | Johan Joubert 0825746262
Christopher Havenga 082 821 1527 | Afslaer: Hennie Goosen

Doeltreffende Bosluis- en Uitwendige Parasietbeheer in Midsomer

Uitwendige parasiete, veral bosluis, bly een van die grootste gesondheids- en produksie-uitdagings vir lewendehaweboere in Suid-Afrika. Februarie se warm, vogtige toestande skep ideale omstandighede vir vinnige bosluisvermeerdering, wat die risiko van siekte-oordrag en produksieverliese aansienlik verhoog. Doeltreffende beheer verg 'n geïntegreerde, strategiese benadering eerder as roetine-of paniekbehandeling.

Waarom is Februarie 'n hoërisikoperiode?

Midsomer word gekenmerk deur:

- Hoë temperatuur
- Hoë humiditeit
- Aktiewe grasgroei
- Verhoogde bosluisoorlewing en -aktiwiteit

Hierdie toestande bevorder bosluisbesmettings en die oordrag van siektes soos:

- Rooiwater (Babesiose)
- Anaplasmose (gal siekte)
- Hartwater (Ehrlichiose)

Swaar besmettings lei tot bloedarmoede, swak groei, laer melkproduksie, verminderde vrugbaarheid en in ernstige gevalle, vrektes.



Belangrikste bosluissoorte by lewendehawe

Die mees problematiese bosluissoorte in Suid-Afrika sluit in:

- Bloubosluis (*Rhipicephalus decoloratus*) – draer van rooiwater
- Bruin-oorosluis (*Rhipicephalus appendiculatus*) – draer van hartwater
- Bontpootosluis (*Amblyomma hebraeum*) – ook betrokke by hartwater

Kennis van watter bosluissoorte op jou plaas voorkom, is noodsaaklik vir die keuse van die regte beheerstrategie.

Beginsels van geïntegreerde bosluisbeheer

Doeltreffende bosluisbeheer rus op vier kernpilare:

1. Chemiese beheer – verantwoordelik en doelgerig

Dipmiddels, pour-on-produkte en inspuitbare middels bly belangrike hulpmiddels, maar onbeheerde gebruik lei tot weerstand. Boere moet:

- Slegs geregistreerde produkte gebruik
- Doseringsaanwysings streng volg
- Behandelingsintervalle respekteer
- Aktiewe bestanddele gereeld roteer

Oor- of onderdosering verhoog die risiko van weerstand en verminder langtermyn doeltreffendheid.

2. Weerstandbestuur: 'n Kritieke realiteit

Bosluis ontwikkel toenemend weerstand teen sekere chemiese

groepe. Teken van weerstand sluit in:

- Bosluise wat kort ná behandeling oorleef
- Verminderde doeltreffendheid van voorheen betroubare produkte

Indien weerstand vermoed word, moet 'n veearts of dieregesondheidspraktisyn geraadpleeg word vir toetsing en alternatiewe beheeropsies.

Weidingsbestuur as beheer-instrument

Weidingspraktyke speel 'n belangrike rol in bosluisbeheer:

- Rotasieweiding verminder gasheerbeskikbaarheid
- Rusperiodes breek die bosluislewensiklus
- Oorbeweiding verhoog besmettingsdruk

Kombinasiebeweiding (byvoorbeeld beeste en skape) kan in sekere gevalle help om spesifieke bosluispopulasies te verminder.

Selektiewe behandeling: nie elke dier, elke keer nie

Moderne parasietbeheer beweeg weg van massabehandeling. Selektiewe behandeling fokus op:

- Jong diere
- Diere met swak kondisie
- Diere met hoë parasietlading

Hierdie benadering verminder koste, vertraag weerstandontwikkeling en behou

sogenaamde "refugia" – 'n belangrike beginsel in volhoubare parasietbeheer.

Rol van genetika en rasaanpassing

Sekere rasse toon natuurlike weerstand teen bosluise. Inheemse en aangepaste rasse is dikwels beter aangepas by plaaslike parasietdruk. Langtermyn telingstrategieë kan help om afhanklikheid van chemiese middels te verminder.

Menslike en dierlike veiligheid

Onbehoorlike hantering van dipmiddels hou gesondheidsrisiko's in vir mense en diere. Gebruik altyd:

- Persoonlike beskermende toerusting
- Korrek gemerkte mengtenks
- Veilige berging van chemikalieë

Volg onttrekkingstye streng om voedselveiligheid te verseker.

Wetlike raamwerk en verantwoordelikheid

Alle parasietbeheerprodukte moet ingevolge die Wet op Diersiektes en verwante regulasies gebruik word. Owerhede soos die Department of Agriculture, Land Reform and Rural Development monitor dieregesondheid en die korrekte gebruik van veeartsenykundige middels.

Internasionale riglyne vir parasietbeheer en weerstandbestuur word ondersteun



deur die World Organisation for Animal Health (WOAH).

Slot

Doeltreffende bosluis- en uitwendige parasietbeheer in Februarie vereis meer as net gereelde dip. 'n Geïntegreerde benadering wat chemiese beheer, weidingsbestuur, selektiewe behandeling en weerstandbestuur kombineer, beskerm nie net dieregesondheid nie, maar verseker ook langtermyn volhoubaarheid en winsgewendheid.

Bronne

- Department of Agriculture, Land Reform and Rural Development (DALRRD), Suid-Afrika
- Wet op Diersiektes, Wet 35 van 1984
- World Organisation for Animal Health (WOAH) – Terrestrial Animal Health Code
- FAO – Tick-borne Disease Control Manuals

BOERhier Artikel



STOP
ROOIWATER EN BOSLUIISOORGEDRAAGDE
GALSIEKTE (ANAPLASMOSE) IN HUL SPORE



Produkt naam: Babex, Registrasienuommer: G4109 Wet 36/1947 (Suid Afrika), Samestelling: [imidokarb dipropionaat 12% m/v, Produkt naam: Rednil, Registrasienuommer: G3911 Wet 36/1947 (Suid Afrika), Samestelling: Diminaseen 70 mg/m², Fenason 375 mg/m², Uitvoerlande: Namibië - V13/17.4.2/1187 (NSD) Registrasiehouer: Kyrón Animal Health (Edms) Bpk., Mpy, Reg. Nr. 2004/021847/07, Eenheid 45C, 45 Parkview Straat, Highway Business Park, Rooihuiskraal Uitbr. 31, Centurion, 0157, Suid Afrika.

DIY DAMLININGS KITS – READY TO INSTALL

Get your liner delivered nationwide –
straight to your door.



- ✓ Nationwide Delivery
- ✓ Complete DIY Kits Available
- ✓ Sized to your dam
- ✓ Easy Installation Guidance
- ✓ Reduce Water Loss

HDPE • PVC • Cement Dam Liners • Zinc Dam Liners

Andre Meyer • 076 062 4272

andre@damlinings.co.za



Livestock Transport

Your trusted partner is safe and efficient animal transportation anywhere in S. A!



Load Capacities:

Sheep and Goats:

350-750 animals

Cattle:

+ -50 Cows

+ -100 Calves



Based in Benoni



072 253 6109

#SustainabilitySynergised

PEOPLE | PLANET | PROFIT



BKB

The Trusted Home of Agriculture
Die Betroubare Tuiste van Landbou

#IntegrityIntegrated

SERVICE EXCELLENCE | ENTREPRENEURSHIP | EARNING | EMPLOYEES | ENVIRONMENT

KAROO KALAHARI MEATMASTER GROEP

Sed 2014

Woensdag - 11:00

25 Februarie 2026

Fire and Wine Arena,
Pretoria



39ste Veiling

20 Ramme & 100 Ooie

Aanlyn beskikbaar by Swiftvee



- 📍 Bloemfontein
- 📍 Upington
- 📍 Beaufort-Wes



ERMELO

AFSLAER Ruan Viljoen 083 414 4792 • **BEMARKER** Johan Taute 073 204 7646
Kalahari Karoo Groep Peter 076 306 3812 • Chris 083 383 8303

Voorwaardes: 1.) Alle kopers moet registreer en 'n kopie van hul ID asook bewys van adres voorsien. 2.) Dag van veiling - GEEN KONTANT. Betaling per kaart of elektroniese oopslasing. 3.) BTW is betaalbaar. 4.) Die verkoper behou die reg voor om enige item voor of tydens die veiling, sonder voorafkennisgewing, te onttrek. 5.) Weissenstraat se standaard verkoopvoorwaardes (Veilingsreëls) is van toepassing - beskikbaar by www.weissenstraat.co.za



AND GUEST SELLERS



SAVE the DATE

WIRU WILDLIFE SERVICES /
NOORDKAAP LEWENDEHAWA AUCTION

28 FEBRUARY 2026 11:00

📍 GELUK SAFARIS, KIMBERLEY



Wildswinkel App available on iOS, Android & Huawei

Auctioneer - Koos Coetzee: 079 945 4355

JP Smith: 082 417 8826 | Carl Vos: 082 467 1807 | Hans Coetzee: 083 742 1128

Chris Koch: 076 144 7558 | Jaco Kloppers: 061 177 2233 | Awie Burger: 083 272 0870

BIG NEWS for South African Farmers: Design Biologix Named Sole Agent for Biogénesis Bagó's FMD Vaccine

South Africa's livestock industry has received a major boost in the fight against Foot-and-Mouth Disease (FMD), with Design Biologix officially appointed as the sole agent for Biogénesis Bagó's FMD vaccine in South Africa, effective immediately.



This announcement, made on 15 January 2026, marks an important development for farmers, veterinarians, and the wider agricultural value chain—especially as the country continues to battle ongoing outbreaks that place pressure on herd health, farm income, food security, and export market access.

Why this matters right now

FMD remains one of the most highly contagious diseases affecting cloven-hoofed animals, particularly cattle, and the impact goes far beyond the sick animal.

When outbreaks occur, farms and entire regions can face:

- Stock movement restrictions
- Lost production and weakened animal condition
- Increased veterinary costs
- Market instability
- Export limitations that affect national income

During 2025, South Africa recorded outbreaks across multiple provinces, including major livestock production regions

such as KwaZulu-Natal, Gauteng, Mpumalanga and the Free State. Despite serious containment efforts, the virus has continued to spread, creating urgency around consistent vaccine availability and rapid deployment.

A stronger vaccination strategy for 2026

Vaccination is a key pillar in South Africa's broader FMD control strategy—particularly with the national goal of achieving "FMD-free with vaccination" status, which is critical for stabilising trade and protecting long-term market access.

In fact, industry and government efforts have already seen more than 950 000 cattle vaccinated using imported vaccines as part of the country's emergency response.

The challenge has been ensuring that vaccination is not only done in hot zones, but also strengthened across broader risk areas—something that requires supply consistency, cold-chain management, and coordinated rollout planning.

This is exactly where the newly announced partnership makes a real difference.

Who is Design Biologix?

Design Biologix is a South African private veterinary vaccine manufacturer that now takes on the responsibility of ensuring Biogénesis Bagó's FMD vaccine is imported and deployed efficiently within South Africa.

Their role includes:

- Importation and supply management
- Cold-chain logistics and distribution support
- Regulatory compliance
- Coordination with national and provincial animal health structures
- Urgent rollout support where vaccines are needed most

For South African farmers, this means one thing: a clearer and more structured route to accessing additional high-quality FMD vaccine supply as pressure increases heading into early 2026.



Who is Biogénesis Bagó?

Biogénesis Bagó is globally recognised as a major player in animal health, known for developing and producing veterinary vaccines used in many livestock markets.

Their FMD vaccine is regarded as highly effective and strain-matched, making it a valuable tool in supporting outbreak response and limiting viral transmission in susceptible herds.

The power of public-private collaboration

This move highlights something South African agriculture has increasingly relied on over the past two years: public-private cooperation.

During 2025, government and industry took major steps to improve response capacity, including:

- Importing large vaccine volumes
- Strengthening industry-led procurement support
- Establishing joint task teams with livestock stakeholders
- Improving coordinated disease response planning

The appointment of Design Biologix represents the next evolution of this model—where a local private manufacturer works directly with an international supplier under strict regulation, aligned with national disease-control priorities.

This type of partnership also supports the broader objectives of the Agriculture and Agro-processing Master Plan (AAMP), which promotes joint investment, innovation, competitiveness, and

food security across the sector.

What this means for farmers on the ground

For commercial and communal producers alike, a reliable supply of FMD vaccine strengthens the ability to:

- Increase vaccination coverage in high-risk areas
- Reduce transmission pressure between herds
- Protect herd productivity and farm profitability
- Lower the long-term impact on trade and movement systems
- Strengthen confidence in national containment efforts

With South Africa's livestock economy valued at around R80 billion, controlling FMD is not only a veterinary priority—it's an economic survival issue.

Important notice: One official communication channel

Design Biologix has confirmed that, following its formal appointment as sole agent, all communication and engagement regarding Biogénesis Bagó's FMD vaccine in South Africa must now go exclusively through Design Biologix.

This applies to:

- Government and regulatory bodies
- Veterinary professionals
- Industry organisations
- Producers and distributors
- Media and stakeholders

This "single-channel" approach is intended to ensure:

- Regulatory integrity
- Technical accuracy
- Coordinated rollout planning
- Disciplined execution of the national strategy

In a crisis like FMD, clarity and control over information flow can make the difference between fast response and costly confusion.

BOERhier takeaway

This appointment is not just a corporate announcement—it is a serious step forward in supporting South Africa's frontline fight against FMD.

A stronger, structured vaccine supply chain means better protection for:

- your cattle, your income, your market access, and the future of the South African livestock industry.

BOERhier will continue following developments closely as the national vaccination strategy expands into 2026.

Wat nou op jou plaas? (What now on your farm?)

- Speak to your local vet about your area's FMD risk status
- Strengthen biosecurity at gates, kraals, handling facilities and auctions
- Keep records of animal movements, purchases and visitors
- Stay alert for official vaccination announcements and protocols
- Never move livestock illegally—this fuels the spread and raises penalties.

BOERhier article

MAXITET-LA

Reg.No./nr. G2588 Act/WH 36/1947 NSC, V05/17, 1.3.2014 Act/WH 132003



**LONG-ACTING INJECTABLE
OXYTETRACYCLINE
(ANTIBIOTIC) SOLUTION**

For the treatment of tick-borne gallsickness (*Anaplasmosis*), heartwater, foot-rot, pneumonia, navel-ill and joint-ill in cattle, sheep, goats and pigs.



FOR ANIMAL USE ONLY /
SLEGS VIR DIEREGEBRUIK



Registration Holder / Registrasiehouer: Kvon Animal Health (Pty) Ltd, Reg. No. 206401164701, Unit 45C, 45 Parkview Street, Highway Builders Park, Rossouwville Ext. 31, Centurion, 0157, South Africa. Tel: 0863 247 463

PULL THAT TRIGGER AND HIT THE TARGET!

GAME ON

EST. 2022

GAME ON TAXIDERMISTRY

strives to provide exceptional services at an affordable price, aiming to create lasting memories for our valued customers.

Our Services :

- European Skull Mounting
- Leather Mounting
- Horn Mounting
- Skull Services
- Hide Tanning
- Full Body/ Shoulder Mounts

CONTACT US

Email: taxidermygameon@gmail.com

Jonathan: 065 902 3244

Facebook: Game on



BREË SPEKTRUM BOSLUIS & RONDEWURM BEHEER
'n Gereed-vir-gebruik opgietsmiddel met 'n nawerkende aksie bosluis en rondewurm beheer.



Produkt naam: Attila Registrasienuommer: G4197 Wet 36/1947 (Suid-Afrika) Samestelling: Fipronil 0,9 % m/v, Abamektien 0,5 % m/v. Registrasiehouer: Kyrón Animal Health (Edms) Bpk., Co. Reg. Nr. 2004/021847/07, Eenheid 45C, 45 Parkview Straat, Highway Business Park, Rooihuiskraal Uitbr. 31, Centurion, 0157, Suid-Afrika. Uitvoerlande: Botswana - BV2200603/A/B[VPS]; Namibië - V19/18.2/1442 Wet 13/2003[NSO]

WATER BACK UP SYSTEM

Eco Tanks

From 990L - 5000L Tank's

Pressure Pumps

DAB EasyBox 1.1 kw

DAB EasyBox Mini .75kw

Tesk PMC 2.2kw

Tesk PMC .75kw

3 Stage Filter

950L From R18 000

1100L From R25 000

2220L From R33 665

5000L From R38 000



HYDRO PLUMBINGS
SOLAR AND PLUMBING

Hydro Plumbings

0731772652

WhatsApp 0817019404

hydro_plumbings@outlook.com

THE SMART BACKUP WATER SOLUTION





26STE LUCASDAM VEILING

📅 26 FEBRUARIE '26 ⌚ 11:00

PLAAS LUCASDAM, POSTMASBURG (GPS: 28°14'54.8"S 22°51'30.3"E)



OP AANBOD/ TEMA:

45 Dorper ramme | 15 Witdorper ramme
5 Boerbok ramme | 10 Savanna ramme
50 Dorper ooie (Ooi + Lam & jong ooie)
25 Witdorper ooie | Kommersiële Savanna ooie



Navrae: John Daniel - 082 552 2933 (Lucasdam Dorpers)
Gasverkopers: Mervin van Greunen - 083 792 9263 | Cristoff Möller - 083 655 4065
Larry Snijders - 063 478 7766 | Johnny Coetzee - 073 424 7540
Bemarker: Roux van der Merwe - 082 781 3735 | John Daniel - 082 552 2933
Stoet- & Spesiale Veilings: Ramona de Bruin - 083 319 8626
Afslaer: Chris Hendriks - 083 449 0852



OBARO

— MAKELAARS

Boer of nie boer?

OBARO Makelaars bied 'n verskeidenheid versekeringsoplossings om vir jou gemoedsrus en vertroue in jou versekeringsbesluite te bied.

Oesversekering

Agri Versekering

Persoonlike Korttermynversekering

Kommersiële Korttermynversekering

Kontak ons vandag vir 'n gratis kwotasie!

Paul Douw Bekker 060 626 5860 / paul.bekker@obaro.co.za



Gesels met ons
op WhatsApp

In samewerking met vooraanstaande versekeraars;



ONE



Holland.

Sutherland

Karoo Meatmasters Klub Veiling

DIE DATUM! OMKRING!



19 Maart 2026 | 11h00 | Sutherland Skougrond

Uiters geharde Meatmaster van droogtegeteisterde area



Sutherland, Calvinia, Williston,
Matjiesfontein, Fraserburg,
Merweville, Laingsburg



**TROTS AANLYN
AANGEBIED DEUR**

KYRON AGRI

Ivermax LA Platinum

89 DAYS CONTROL OF BLUE TICK*
DAG BEHEER TEEN BLOUOSLUIS*

† Macrocytic lactone

Registration holder: Kyrion Animal Health (Pty) Ltd, Co. Reg. No. 2004/021847/07, Unit 45C, 45 Parkview Street, Highway Business Park, Rooihuiskraal Ext. 31, Centurion, 0157, South Africa. Product Name: Ivermax Platinum LA. Registration Number: G3832 Act 36/1947 (South Africa). Composition: Ivermectin 3,15 % m/v. Export countries: Botswana – BV2100245/A[VPS]; Namibia – V13/18.1.2/1186[NSO].

Interne Parasietbeheer in Midsomer – 'n Volhoubare Benadering

Interne parasiete bly een van die mees onderskatte, maar ekonomies skadelike uitdagings vir lewendehaweboere in Suid-Afrika. Gedurende midsomer, veral in Februarie, skep warm temperature en voldoende vog ideale toestande vir die oorlewing en verspreiding van parasietlarwes op weidings. Onbehoorlike bestuur lei tot swak groei, laer produksie, verhoogde vatbaarheid vir siektes en toenemende weerstand teen ontwormingsmiddels.

Doeltreffende interne parasietbeheer vereis 'n strategiese, geïntegreerde benadering eerder as roetine-ontworming.

Waarom is midsomer 'n hoërisikoperiode?

Die meeste interne parasiete het 'n lewensiklus wat afhanklik is van vog en warmte. Eiers wat in mis uitgeskei word, ontwikkel vinnig tot aansteeklike larwes wat op grasoppervlaktes oorleef. Diere neem hierdie larwes tydens weiding in.

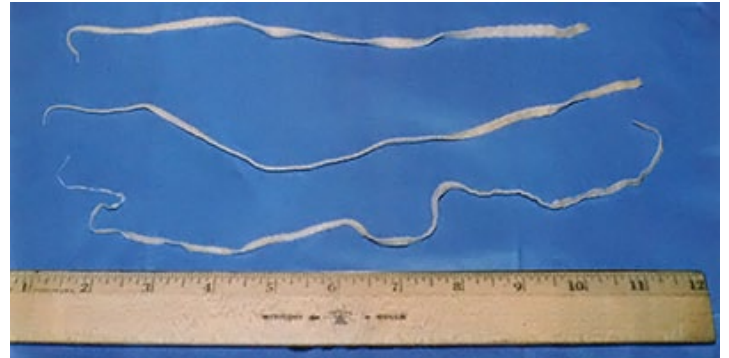
Hoërisiko-diere sluit in:

- Lammers en kalwers
- Lakterende ooie en koeie
- Diere onder hitte- of voedingsstres
- Diere met swak liggaamstoestand

Belangrikste interne parasiete in Suid-Afrika

Die mees algemene interne parasiete by herkouers sluit in:

- Haemonchus contortus (rooidermwurm) – veral problematies by skape en bokke
- Trichostrongylus-spesies



- Ostertagia-spesies by beeste

Rooidermwurm is besonder gevaarlik aangesien dit ernstige bloedarmoede en skielike vrektes kan veroorsaak, dikwels sonder voorafgaande diarree.

Kliniese tekens van parasietbesmetting

Boere moet bedag wees op:

- Gewigsverlies of swak groei
- Bleek slymvliese (bloedarmoede)
- Swak wol- of haarkwaliteit
- Diarree (nie altyd teenwoordig nie)
- Verminderde melkproduksie
- Lusteloosheid

By skape is die FAMACHA-stelsel 'n waardevolle hulpmiddel om bloedarmoede te evalueer en behandelingsbesluite te ondersteun.

Selektiewe ontworming: die kern van volhoubaarheid

Moderne parasietbeheer beweeg weg van massabehandeling na selektiewe ontworming. Dit behels dat slegs diere met 'n hoë parasietlading behandel word. Voordele sluit in:

- Verminderde middelgebruik
- Stadiger ontwikkeling van weerstand
- Laer produksiekoste

Die konsep van refugia – parasiete wat nie aan middels blootgestel word nie – is noodsaaklik om weerstandontwikkeling te vertraag.

Weerstand teen ontwormingsmiddels: 'n Ernstige bedreiging

Weerstand teen anthelmintika is reeds wydverspreid

in Suid-Afrika, veral by kleinvee.
Oorsake sluit in:

- Te gereelde ontworming
- Onder-dosering
- Herhaalde gebruik van dieselfde aktiewe bestanddeel
- Behandeling van die hele kudde sonder seleksie

Tekens van weerstand sluit voortgesette produksieverliese ondanks gereelde ontworming in. Waar weerstand vermoed word, behoort 'n mis-eiertelling (FEC) en doeltreffendheidstoets in samewerking met 'n veearts gedoen te word.

Rol van weidingsbestuur in parasietbeheer

Weidingsbestuur is een van die mees onderskatte, maar kragtige parasietbeheerinstrumente:

- Rotasieweiding verminder herbesmetting
- Rusperiodes laat larwes vrek
- Oorbeweidings verhoog larwe-inname naby die grond

Waar moontlik, help lae-risiko-

weidings (soos hoë veld of gerusde kampe) om jong diere te beskerm.

Voeding en weerstand teen parasiete

Goeie voeding verhoog diere se natuurlike weerstand teen parasiete. Proteïen- en mineraaltekorte verlaag die immuunrespons en verhoog vatbaarheid. Aanvullende voeding, veral vir jong en lakterende diere, speel 'n belangrike ondersteunende rol.

Wetlike en professionele riglyne

Alle ontwormingsmiddels moet volgens etiketvoorskrifte gebruik word. Die Department of Agriculture, Land Reform and Rural Development bevorder verantwoordelike gebruik van veeartsenykundige middels om weerstand te beperk.

Internasionale riglyne vir volhoubare parasietbeheer word ondersteun deur die World Organisation for Animal Health (WOAH) en die Food and

Agriculture Organization of the United Nations.

Slot

Interne parasietbeheer in midsomer vereis dissipline, kennis en beplanning. Deur selektiewe ontworming, goeie weidingsbestuur, gebalanseerde voeding en samewerking met veeartsenykundige kundiges, kan boere produksieverliese beperk en die doeltreffendheid van ontwormingsmiddels vir die toekoms beskerm.

Bronne

- Department of Agriculture, Land Reform and Rural Development (DALRRD), Suid-Afrika
- World Organisation for Animal Health (WOAH) – Terrestrial Animal Health Code
- FAO – Sustainable Helminth Control Guidelines
- South African Veterinary Association (SAVA) Parasite Management Publications

BOERhier Artikel

KYRON AGRI

Ivermax LA Platinum

89 DAYS CONTROL OF BLUE TICK*
DAE BEHEER TEEN BLOUBOSLUIS*

† Macrocyclic lactone

Registration holder: Kyrion Animal Health (Pty) Ltd, Co. Reg. No. 2004/021847/07, Unit 45C, 45 Parkview Street, Highway Business Park, Rooihuiskraal Ext. 31, Centurion, 0157, South Africa. Product Name: Ivermax Platinum LA. Registration Number: G3832 Act 36/1947 (South Africa). Composition: Ivermectin 3,15 % m/v. Export countries: Botswana – BV2100245/A[VPS]; Namibia – V13/18.1.2/1186[NSO].

KYRON AGRI

Complex + A&E FOR SHEEP AND GOATS

Complex + A&E FOR CATTLE

THE IDEAL BALANCE OF VITAMINS + MINERALS

FOR OPTIMAL PERFORMANCE OF YOUR HERD/FLOCK!¹
OPTIMISE YOUR ANIMALS^{2,3,4}
Immunity | Enzyme function | Fertility | Growth

Product name: Complex + A&E for sheep and goats Registration number: G4119 Act 36/1947 (South Africa). Composition per mℓ: Vitamin A 7 500 IU, Vitamin E 25 IU, Selenium 0,8 mg, Zinc 11 mg, Manganese 2,7 mg. Export countries: Botswana - BV2100107/A[PM]; Namibia - V17/19.2/1390/NSO. Product name: Complex + A&E for cattle Registration number: G4120 Act 36/1947 (South Africa). Composition per mℓ: Vitamin A 25000 IU, Vitamin E 50 IU, Selenium 1,25 mg, Copper 4 mg, Zinc 11 mg, Manganese 2,7 mg. Export countries: Botswana - BV2100106/A [PM]; Namibia - V17/19.2/1390/NSO. Registration holder: Kyrion Animal Health (Pty) Ltd, Co. Reg. No. 2004/021847/07, Unit 45C, 45 Parkview Street, Highway Business Park, Rooihuiskraal Ext. 31, Centurion, 0157, South Africa.
References: 1. Calender, S.P., Mathews, J.A., Kolesnik, K. & Werner, S.D. 2017. Micronutrient utility in pharmaceuticals: Implications for multi-drug delivery. International Journal of Pharmaceutics, 526, 472-482. | 2. Head, T.H. & Hoff, S. 2011. The use of blood analysis to evaluate trace mineral status in omnivorous livestock. Veterinary Clinics of North America Food Animal Practice, 27:255-283 | 3. Lopez-Alonso, M. 2012. Trace Minerals: Not too much, not too little. International Scholarly Research Network Veterinary Science. doi: 10.5402/2012/104823. | 4. Wahlberg, M.J. & Greher, S.P. 2006. Minerals & Vitamins for Sheep - Extension Article, available online at: <http://www.sheep101.info/201/mineralsandvitamins.html>.

Ovi Dose 4

Oral drench

1 3 4 8 †

FOR ANIMAL USE ONLY



4 WEEK RESIDUAL
ACTION AGAINST
WIREWORM

Contains **4** Active
Ingredients
+2 Minerals
Selenium + Cobalt



ROUNDWORMS
TAPEWORMS
LIVER FLUKE
CONICAL FLUKE
NASALWORMS



**FOR THE TREATMENT OF ROUNDWORMS, TAPEWORMS, LIVER FLUKE,
CONICAL FLUKE & NASALWORM.**

Composition: Praziquantel 2,50 % m/v, Levamisole 4,00 % m/v, Closantel 3,75 % m/v, Ivermectin 0,10 % m/v, Sodium selenite 0,11 % m/v, As Selenium base 0,96 mg/mℓ, Cobalt chloride 0,10 % m/v, As Cobalt base 0,70 mg/mℓ

† ① Macroyclic lactone, ③ Imidothiazole, ④ Salicylanilide, ⑧ Isoquinoline



RUMILICK

Accelerator

Rumilick Accelerator is 'n produksielek wat aan groeiende kalwers en lammers gevoer word na speen op goeie kwaliteit weiding. Hierdie lek fokus op karkasontwikkeling, eeder as vetneerlegging wat dit ideaal maak vir die grootmaak van stoetdiere asook vir "backgrounding".

BESTEL VANDAG!



www.hoevelddienste.co.za

Jou Vee Verdien Die Beste



Complex + A&E
FOR SHEEP AND GOATS



THE IDEAL BALANCE OF
VITAMINS + MINERALS

FOR OPTIMAL PERFORMANCE OF YOUR HERD/FLOCK!¹
OPTIMISE YOUR ANIMALS^{2,3,4}
Immunity | Enzyme function | Fertility | Growth

Complex + A&E
FOR CATTLE



Product name: Complex + A&E for sheep and goats Registration number: G4119 Act 36/1947 (South Africa). Composition per ml: Vitamin A 7 500 IU, Vitamin E 25 IU, Selenium 0.8 mg, Zinc 11 mg, Manganese 2.7 mg. Export countries: Botswana - BV2100107/A [POM], Namibia - V17/19.2/1388 [NSO] Product name: Complex + A&E for cattle Registration number: G4120 Act 36/1947 (South Africa). Composition per ml: Vitamin A 25000 IU, Vitamin E 50 IU, Selenium 1.25 mg, Copper 4 mg, Zinc 11 mg, Manganese 2.7 mg. Export countries: Botswana - BV2100106/A [POM], Namibia - V17/19.2/1390 [NSO] Registration holder: Kyrón Animal Health (Pty) Ltd, Co. Reg. No. 2004/021847/07, Unit 45C, 45 Parkview Street, Highway Business Park, Rooihuiskraal Ext. 31, Centurion, 0157, South Africa.
References: 1. Callender, S.P., Matthews, J.A., Kobaynik, K. & Wetzig, S.D. 2017. Micronutrient utility in pharmaceuticals: Implications for multidrug delivery. International Journal of Pharmaceutics, 526: 425-442. | 2. Heath, T.H. & Hoff, B. 2011. The use of blood analysis to evaluate trace mineral status in ruminant livestock. Veterinary Clinics of North America Food Animal Practice, 27:255-263 | 3. Lopez-Alonso, M. 2012. Trace Minerals: Not too much, not too little. International Scholarly Research Network Veterinary Science, doi:10.5402/2012.739525. | 4. Wallberg, M.L. & Greber, S.P. 2006. Minerals & Vitamins for Sheep - Extension Article, available online at: <http://www.sheep101.info/2010/mineralsandvitamins.html>.

KAP/PM186/2023/2



AFRI AIR

AGRICULTURE DRONE SOLUTIONS



072 434 5776 (Christiaan Winckler)



082 774 0343 (Marlett Winckler)



info@aadrones.co.za

www.aadrones.co.za



AGRICULTURE
PRECISION AGRICULTURE SOLUTIONS

Bloem
Skou • Show
Beach
parity
23 April - 2 May 2026



WHERE GENETICS EVOLVE



Voorspoedige Nuwejaar!

Veilingsdatums vir 2026:

11 Junie 2026, Reitz

27 Augustus 2026, Parys



#SustainabilitySynergised

PEOPLE | PLANET | PROFIT



#IntegrityIntegrated

SERVICE EXCELLENCE | ENTREPRENEURSHIP | EARNING | EMPLOYEES | ENVIRONMENT

Kyron Wildlife Veterinary Workshop 2025

Phala Phala Wildlife • Bela Bela
• 2–4 November 2025



Kyron proudly hosted the 2025 Wildlife Veterinary Workshop at the breathtaking Phala Phala Wildlife, located near Bela Bela. Bringing together veterinarians, veterinary nurses and veterinary students for three intensive days of learning, collaboration and hands-on field experience. The workshop was designed to advance skills in wildlife immobilization, field safety and the growing field of conservation medicine, disciplines that continue to play a critical role in protecting Southern Africa's wildlife heritage.

This year's program offered a dynamic blend of theoretical lectures and practical demonstrations, all centered around the theme **"Update on Wildlife Immobilization & Human Trauma & Drug Exposure."** A key focus throughout the workshop was the Low-Opioid Darting Protocol, highlighting the pivotal role of Medetomidine in modern wildlife anesthesia. Delegates were introduced to the latest scientific developments and field-based approaches aimed at improving immobilization safety



and outcomes across a variety of species.

The workshop was enriched by the contributions of a distinguished panel of experts. Kyron extends heartfelt appreciation to specialist presenters which included:

- **Dr Hendrik Hansen** and **Dr Morné de la Rey** of Rhino Repro and Embryo Plus;
- **Dr Andre Uys** of North West Wildlife Veterinary Services & Conservation Solutions;
- **Dr JW Eksteen** of Kroonstad Animal Hospital;
- Dr Gerhardus Scheepers of Zodiac Dierkliniek Brits;
- **Dr Johan Steyl** of the University of Pretoria, Faculty of Veterinary Science;
- **Dr Manie du Plessis** of MJ du Plessis Wildlife Veterinary Services;

- **Dr Christina Eberhardt**, Equine Internal Medicine Specialist at the University of Pretoria, Faculty of Veterinary Science;
- **Dr James Morrow**, Emergency Medicine Physician from the Eastern Cape Department of Health; and
- **Dr Nico du Preez** from Kyron Animal Health.

Across the three days, participants explored a wide range of clinical and operational topics essential to wildlife veterinary work. These included Medetomidine-based immobilization strategies, Butorphanol applications in White Rhino anesthesia, and species-specific protocols for Sable, Roan, Spiral-horned antelope, Giraffe, Springbok, Impala and Predators. Dr Christina Eberhardt lectured and demonstrated the use of the Televet ECG machine in heart rate

and cardiac rhythm monitoring on various wildlife species. Breeding soundness examinations were a popular topic with lectures and field demonstration by Dr Morné de la Rey and Dr Hendrik Hansen. Dr Johan Steyl, Section Head at the Pathology Department of the Faculty of Veterinary Science at the University of Pretoria, tackled the difficult topic of Anesthesia associated mortalities in wildlife with Diagnostic challenges and consequences mostly related to the Wildlife Insurance Industry.

Given the increasing risks wildlife veterinarians face in the field, sessions on accidental exposure to potent tranquilizing agents and first-response trauma management in remote settings were especially valuable, equipping practitioners with critical life-saving skills, this was expertly handled by Dr James Morrow specializing in Emergency care.

Complementing the theoretical sessions were a series of practical darting and clinical procedures carried out on-site. These included ultrasound scanning and oocyte collection from an adult White Rhino cow, semen collection and breeding soundness assessments in an adult White Rhino bull and Blue Wildebeest bull, as well as reproductive and immobilization procedures on African Buffalo cow and Kudu. All immobilized animals were monitored using



comprehensive anesthetic evaluation, including ECG, heart and respiratory rate monitoring, blood pressure, pulse oximetry and blood gas analysis, ensuring both educational value and the highest standards of animal care.

Kyron extends sincere gratitude to the sponsors whose support made this workshop possible: Octavoscene, Investec Private Banking, Embryo Plus, Rhino Repro, Lomaen Medical, Vetceuticals, Motsumi Darts, Sonorite, Midlands Veterinary Wholesalers, Kuda Insurance, Gallagher Power Fencing, VNM Insurance Brokers, Rhino911 and PSG Wealth. Your commitment directly strengthens the wildlife

veterinary community and contributes to the future of conservation in South Africa.

A special word of thanks goes to Phala Phala Wildlife for their exceptional hospitality and for generously welcoming our large group to their beautiful reserve. Your support created the perfect environment for meaningful learning and collaboration.

Finally, to all delegates, presenters and partners: Thank you for your passion, energy and dedication. Your contributions continue to uplift wildlife health, veterinary excellence and conservation across Southern Africa.

Written by: Li-Ann Grobler

Registration holder: Kyron Animal Health (Pty) Ltd. Co. Reg. No. 2004/021847/07, Unit 45C, 45 Parkview Street, Highway Business Park, Rooihuiskraal Ext. 31, Centurion, 0157, South Africa. Product Name: Ivermax Platinum LA. Registration Number: G3832 Act 36/1947 (South Africa). Composition: Ivermectin 3,15 % m/v. Export countries: Botswana – BV2100245/A[VPS]; Namibia – V13/18.1.2/1186[NSD].



BENUT GELEENTHEDE TANS IN DIE VEEBEDRYF!!!

OVK bied verskeie **FINANSIERINGSOPSIES** waar produksie insette ter ondersteuning van kuddes of afrond van slagvee gefinansier kan word

Kontak vandag nog u kredietbestuurder vir meer inligting!

Terme en voorwaardes geld

www.ovk.co.za

VIR MEER INLIGTING KONTAK:

Bethlehem: **063 792 5694** • Bloemfontein: **082 056 4341** • Burgersdorp: **082 759 4103** • Cradock: **082 468 3616**
Ficksburg: **082 417 6192** • Hopetown: **082 884 3296** • Humansdorp: **082 805 3252**
Ladybrand: **082 923 5997** • Ladybrand (Nie-Landbou): **051 923 4783**
Port Elizabeth & Nasionaal (Vesel): **082 854 9112** • Wesselsbron: **079 513 7656**



DIE BESTE BOD
THE BEST BID

LIVESTOCK • GAME • MOVABLE ASSETS • PROPERTY



LEWENDEHAWE • WILD • LOSGOED • EIENDOM

www.vleissentraal.co.za



Invest in **Pure Sunflower Potential**

With Sensako's *sunflower cultivars* we can help you plant with confidence and change *good plans* into *excellent yields*.

SNK 242 CL
SY 3970 CL
SNK 270 CL
SNK 441 CL

- High oil content with premiums according to production scale.
- Suitable for planting in a Clearfield production system.
- Adapted to local growing conditions.
- Suitable for early and late plantings.

We help you grow

w | syngenta.co.za
f | SENSAKO
yt | SENSAKO
t | 27 (0) 58 303 4690





ILE DE FRANCE

ELITE SA

*Nasionale
Veiling*



19 SEPTEMBER 2026

AFRIDOME - PARYS, VRYSTAAT

Doeltreffende Weidingsbestuur tydens Midsomer

Weidingsbestuur vorm die fondament van winsgewende en volhoubare lewendehaweproduksie. Gedurende midsomer, veral in Februarie, lyk veldtoestande dikwels misleidend goed: grasse is lank, groen en volop. Tog is dit juis in hierdie tydperk waar swak bestuursbesluite ernstige langtermynskade aan veldtoestand, diereprestasie en toekomstige produksie kan veroorsaak.

Doeltreffende weidingsbestuur in midsomer vereis 'n balans tussen optimale benutting en voldoende rus.

Waarom is midsomer 'n kritieke bestuursfase?

In Februarie is:

- Grasgroeï vinnig
- Reënval onreëlmatig
- Temperature hoog
- Diere se voedingsbehoefte verhoog

Hoewel biomassa volop is, daal die voedingswaarde van grasse namate plante verouder en saad vorm. Ongesofistikeerde bestuur lei tot oorbeweiding, swak hergroeï en 'n afname in veldgehalte later in die seisoen.



Begrip van grasgroeï en voedingswaarde

Grasse het hul hoogste voedingswaarde tydens:

- Jong vegetatiewe groeï
- Hoë blaar-tot-stingel-verhouding

Namate gras:

- Langer staan
- Blom en saad vorm

... neem ru-proteïen en verteerbaarheid af, terwyl veselinhoud toeneem. Diere kan dus fisies genoeg vreet, maar tog voedingsgebreke ontwikkel.

Rotasieweïding: die hoeksteen van somerbestuur

Rotasieweïding is een van die doeltreffendste maniere om veld te beskerm en produksie te optimaliseer. Die beginsel is eenvoudig:

- Beweï kort
- Rus lank

Voordele sluit in:

- Verbeterde hergroeï
- Beter wortelontwikkeling

- Verminderde parasiet- en bosluisdruk
 - Meer egalige benutting van veld
- Rusperiodes van 30–60 dae (afhangelend van veldtipe en reënval) word algemeen aanbeveel tydens somergroeï.

Die gevaar van oorbeweïding in Februarie

Oorbeweïding tydens midsomer het verreikende gevolge:

- Verminder herfs- en winterproduksie
- Verswak wortelreserwes
- Bevorder indringerplante
- Verlaag veld se drakrag oor tyd

'n Algemene fout is om te dink dat groen veld nie oorbeweï kan word nie. In werklikheid is dit die herhaalde afbyt van jong hergroeï wat die grootste skade aanrig.

Aanpassing van veebelading

Veebelading moet dinamies bestuur word. Faktore om in ag te neem sluit in:

- Reënvalpatrone
- Veldtoestand

- Direktklas en produksiefase

Waar veld onder druk kom, behoort boere betyds:

- Diere uit te skakel
- Jong diere te skuif na beter kampe
- Aanvullende voeding strategies te gebruik

Hierdie besluite is makliker en goedkoper in Februarie as later in die droë seisoen.

Weidingsbestuur en parasietbeheer

Goeie weidingsbestuur ondersteun ook parasietbeheer:

- Kort beweidingsperiodes beperk herbesmetting
- Rus laat parasietlarwes vrek
- Oorbeweiding verhoog larwe-inname naby die grond

Die kombinasie van weidingsbestuur met selektiewe parasietbeheer verhoog albei se doeltreffendheid.

Waterpunte en kampuitleg

In warm somertoestande beïnvloed water beskikbaarheid weidingspatrone direk. Swak geplaasde waterpunte lei tot:

- Oorbeweiding rondom drinkplekke
- Ongelyke benutting van kampe

Goeie kampuitleg en voldoende waterpunte help om veld eweredig te benut en stres by diere te verminder.

Rol van aanvullings tydens somerweiding

Selfs op goeie somerveld kan aanvullende lekke nodig wees, veral:

- Fosfaatlekke
- Sporelementaanvullings

Hierdie aanvullings ondersteun:

- Beenontwikkeling
- Vrugbaarheid
- Melkproduksie

Institusionele riglyne en beste praktyke

Riglyne vir volhoubare veldbestuur word ondersteun deur die Department of Agriculture, Land Reform and Rural Development en internasionaal deur die Food and Agriculture Organization of the United Nations.

Hierdie beginsels strook ook met volhoubaarheidsraamwerke wat

deur die World Organisation for Animal Health (WOAH) ondersteun word, aangesien veldtoestand direk dieregesondheid beïnvloed.

Slot

Midsomer is nie 'n tyd vir passiewe bestuur nie. Dit is die belangrikste fase om veld te beskerm, produksie te optimaliseer en die grondslag vir herfs en winter te lê. Deur strategiese rotasieweiding, aangepaste veebelading en deeglike monitering, kan boere hul veld en kuddes gelyktydig verbeter.

Bronne

- Department of Agriculture, Land Reform and Rural Development (DALRRD), Suid-Afrika
- Food and Agriculture Organization of the United Nations (FAO) – Rangeland Management Guidelines
- World Organisation for Animal Health (WOAH) – Animal Production & Welfare Frameworks
- Agricultural Research Council (ARC), Suid-Afrika – Veldbestuurnavorsing

BOERhier Artikel

Product Name: Attila **Registration Number:** G4197 Act 36/1947 (South Africa). **Composition:** Fipronil 0,9% m/v, Abamectin 0,5% m/v. **Registration holder:** Kyron Animal Health (Pty) Ltd, Co. Reg. Nr. 2004/021847/07, Unit 45C, 45 Parkview Street, Highway Business Park, Rooihuiskraal Ext. 31, Centurion, 0157, South Africa. **Export countries:** Botswana - BV2200603/A/B[VPS]; Namibia - V19/18.2/1442 [NSO]

Product name: Babex **Registration number:** G4109 Act 36/1947 (South Africa). **Each 1 ml contains:** Imidocarb dipropionate 12 % m/v. **Product name:** Rednil **Registration number:** G3911 Act 36/1947 (South Africa). **Composition:** Diminazene 70 mg/ml, Phenazone 375 mg/ml. **Export countries:** Namibia - V13/17.A.2/1187 Act 13/2003 [NSO] **Registration holder:** Kyron Animal Health (Pty) Ltd, Co. Reg. No. 2004/021847/07, Unit 45C, 45 Parkview Street, Highway Business Park, Rooihuiskraal Ext. 31, Centurion, 0157, South Africa.

OUR BOERBOELS

- WE TAKE THEM VERY SERIOUSLY
- WE PROTECT THEM VERY FIERCELY
- WE PRODUCE THEM VERY CAREFULLY

OUR PUREBRED BOERBOELS ARE CAREFULLY SELECTED AND BRED FOR TYPE, SOUNDNESS, AND PURPOSE, AS WELL AS CLASSIC BEAUTY, ALWAYS CONSIDERING THE HISTORICAL SIGNIFICANCE OF THE BOERBOEL BREED.

FOR ^{THE} Love ^{OF} PUREBRED BOERBOELS

PROMOTE - PROTECT - EDUCATE

UNLAWFUL ACTIVITIES UNDER THE ANIMAL IMPROVEMENT ACT INCLUDE MISREPRESENTING BREEDERS, WITH PENALTIES OF FINES OR UP TO A YEAR IN PRISON.

THE BOERBOEL IS A DECLARED SOUTH AFRICAN LANDRACE, AND THE BOERBOEL IS A PART OF SOUTH AFRICAN HERITAGE. IN SOUTH AFRICA SABBS IS THE ONLY LEGAL REGISTRATION AUTHORITY FOR BOERBOELS.

DOGS MUST BE APPRAISED IN ORDER TO BE REGISTERED.

THUS, ANY UNIDENTIFIED DOG IS A DIFFERENT BREED OR A CROSSBREED. SELLING SMALL PUPPIES AS BOERBOELS IF THEY ARE NOT BIRTH NOTIFIED IS ALSO A MISDEMEANOR.

WWW.SABBS.CO.ZA

DESIGNED BY WILDFIREMOCKINGJAY GRAPHIC DESIGN

BOERhier
'n Boer is gekies deur God

FARMhere
Farmers are handpicked by God

BH Veilings: 5th of every month
FARMhere: 15th of every month
BOERhier: 25th of every month

Our advertising rates

One price to Advertise in ALL 3 Monthly magazines.

Month to Month - R6500

- 3 magazines
- 30 days social media
- Boosting

6 Month Agreement - R5800 per month

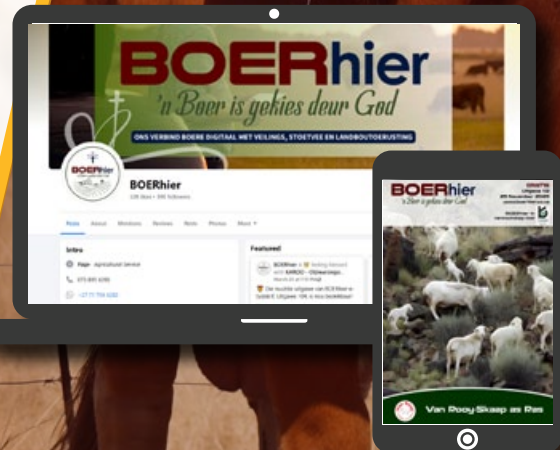
- 3 magazines
- 30 days social media
- Boosting

12 Month Agreement - R5500 per month

- 3 magazines
- 30 days social media
- 1x Front cover & feature article
- Boosting

(0) 73 895 6392 | (0) 73 895 6392

info@boerhier.co.za



www.boerhier.co.za



OSTRICH FARMING TRAINING

In Polokwane for R1500 pp
7 March 2026

Our training is tailored for beginners and
experienced Ostrich farmers

Training includes:

- Onsite training (Practical)
- Expert Knowledge
- 6 months mentorship
- Study Manuals
- Network Opportunities
- Vaccination plan
- Ostrich & Wine Tasting
- Breakfast & Lunch



Contact Witness Bango
079 830 6962

OUR PRODUCTS:



HDPE 0.5mm - 2mm



DIY Cement Dam



Mesh Dam



Recycled PVC 600 mic & 510gsm



Recycled white bottom 600mic 510gsm



Erricson Dam IPV Cement Dam




MAINTANANCE



 (+27) 76 062 4272

 www.damlinings.co.za

 andre@damlinings.co.za



Exploring the art of photo and videography: Crafting stories with creativity!

Creativity and storytelling
Capture moments, share emotions



Sudden Illness, Lameness and Emergency Response in Livestock

Sudden illness or lameness in livestock is one of the most stressful and potentially costly situations a farmer can face. During February, the risk increases significantly due to heat stress, high parasite pressure, infectious diseases and nutritional imbalances. Quick, informed decision-making during the first few hours often determines whether losses are limited—or escalate into herd-wide problems.

An effective emergency response relies on early detection, isolation, professional intervention and strict biosecurity.

Why February is a high-risk period

Mid-summer conditions in South Africa create a perfect storm for disease expression:

- Heat stress suppresses immunity
- Parasite burdens peak
- Bacterial infections thrive in warm, wet conditions
- Toxic plants are actively growing
- Nutritional deficiencies become evident

As a result, animals that were coping earlier in the season may suddenly deteriorate.



Recognising early warning signs

Farmers should train themselves and staff to identify abnormal behaviour immediately. Key warning signs include:

- Sudden lameness or reluctance to walk
- Loss of appetite
- Isolation from the herd
- Excessive salivation
- Fever
- Rapid or laboured breathing
- Swelling of joints, feet or face
- Sudden drop in milk production
- Any acute onset affecting more than one animal should raise serious concern.

Lameness: more than just a foot problem

- Lameness in February is commonly linked to:

- Foot rot and interdigital infections
- Foot abscesses
- Tick-borne diseases
- Traumatic injuries
- Nutritional imbalances

Notifiable diseases such as Foot-and-Mouth Disease (FMD)

Animals showing lameness combined with mouth lesions, drooling or fever must be treated as suspected FMD cases until proven otherwise.

Immediate actions when illness is detected

1. Isolate the animal immediately

Move the affected animal to a designated isolation or sick pen:

- Prevent contact with the herd
- Use separate equipment if possible

- Restrict access by people and vehicles

Isolation reduces disease spread and allows closer observation.

2. Minimise movement and stress

Do not move animals unnecessarily. Stress worsens disease outcomes, especially during heat. Provide shade, water and a calm environment.

3. Do NOT self-diagnose high-risk cases

While minor injuries can be managed on-farm, systemic illness, fever, multiple cases or rapid deterioration require professional assessment.

When to call a veterinarian immediately

A veterinarian must be contacted without delay when:

- More than one animal shows symptoms
- There is fever, mouth or foot lesions
- Young animals are affected
- Deaths occur suddenly
- Symptoms worsen rapidly
- Notifiable diseases are suspected

South African law requires that certain diseases be reported without delay to state veterinary services.

Legal obligations and disease reporting

Diseases such as Foot-and-Mouth Disease are controlled and notifiable under the Animal Diseases Act (Act 35 of 1984). Any suspicion must be reported immediately to:

- A private veterinarian
- A state veterinarian
- The local office of the Department of Agriculture, Land Reform and Rural Development

Failure to report is a criminal offence and endangers the entire livestock industry.

Biosecurity during emergency situations

Emergency responses often lead to mistakes that spread disease. Key principles include:

- Limit visitors and animal movements
- Disinfect footwear, tools and vehicles
- Do not sell, move or slaughter suspect animals
- Keep detailed records of symptoms and timelines

Good records greatly assist veterinarians and authorities during investigations.

Supportive care while awaiting diagnosis

Under veterinary guidance, supportive care may include:

- Ensuring constant access to clean water
- Providing shade and ventilation
- Withholding stressful handling
- Monitoring temperature and appetite

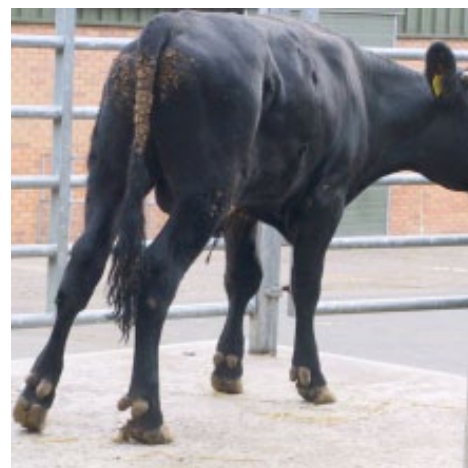
Never administer antibiotics, anti-inflammatories or vaccines without professional advice during suspected infectious outbreaks.

The role of training and preparedness

Prepared farms respond better to emergencies. This includes:

- Staff training in disease recognition
- Clear isolation protocols
- Contact details for veterinarians readily available
- Designated sick camps
- Regular review of emergency procedures

Preparedness reduces panic, delays and costly errors.



Industry and international standards

Emergency disease response protocols align with standards set by the World Organisation for Animal Health (WOAH), which emphasise early reporting, movement control and traceability.

Research and best-practice guidelines in South Africa are further supported by the Agricultural Research Council.

Conclusion

Sudden illness or lameness should never be ignored or delayed—especially in February. Rapid isolation, informed decision-making, professional veterinary involvement and strict biosecurity protect not only individual animals, but the entire herd and industry.

In emergency situations, speed, discipline and compliance save lives and livelihoods.

Sources

- Department of Agriculture, Land Reform and Rural Development (DALRRD), South Africa
- Animal Diseases Act, Act 35 of 1984
- World Organisation for Animal Health (WOAH) – Terrestrial Code
- Agricultural Research Council (ARC), South Africa
- FAO – Emergency Animal Disease Response Guidelines

BOERhier article



What is the next evolution in farming? Pick an insurer that's already there.

Farming is constantly changing. Shouldn't your insurance do the same?
As a market leader with over 105 years of experience and a nationwide infrastructure, you can count on Santam to be at the forefront of farming.

**To find out more about our agriculture insurance,
speak to your intermediary or visit santam.co.za/products/agriculture.**

Santam is an authorised financial services provider (FSP 3416),
a licensed non-life insurer and controlling company for its group companies.



READY TO ROLL READY TO HARVEST

PRE-SEASON INSPECTION | GENUINE CASE IH PARTS.

GENUINE PARTS
HIGH PERFORMANCE



CASE IH

TLU SA TRAUMAFONDS

Hulp vir boere in nood.
Droeë tye?
Het geweld getref?
Geen inkomste?
Gemeenskappe in nood?



Staan TLU SA by deur
'n bydrae te lewer.

Ons bied (soos moontlik):

Berading ná trauma

Hulp ná plaasaanvalle

Droogtehulp en
voedselondersteuning

Opleiding en opheffing

Noodleniging vir gesinne
sonder inkomste

ATTILA
BREË SPEKTRUM BOSLUIS & RONDEWURM BEHEER
'n Gereed-vir-gebruik opgietsmiddel met 'n nawerkende aksie bosluis en rondewurm beheer.

Produkt naam: Attila Registrasienommer: G4197 Wet 36/1947 (Suid-Afrika) Samestelling: Fipronil 0,9 % m/v, Abamektien 0,5 % m/v. Registrasiehouer: Kyron Animal Health (Edms) Bpk., Co. Reg. Nr. 2004/021847/07, Eenheid 45C, 45 Parkview Straat, Highway Business Park, Rooihuiskraal Uitbr. 31, Centurion, 0157, Suid-Afrika. Uitvoerlande: Botswana - BV2200603/A/B/VPS; Namibië - V19/18.2/1442 Wet 13/2003 NSO

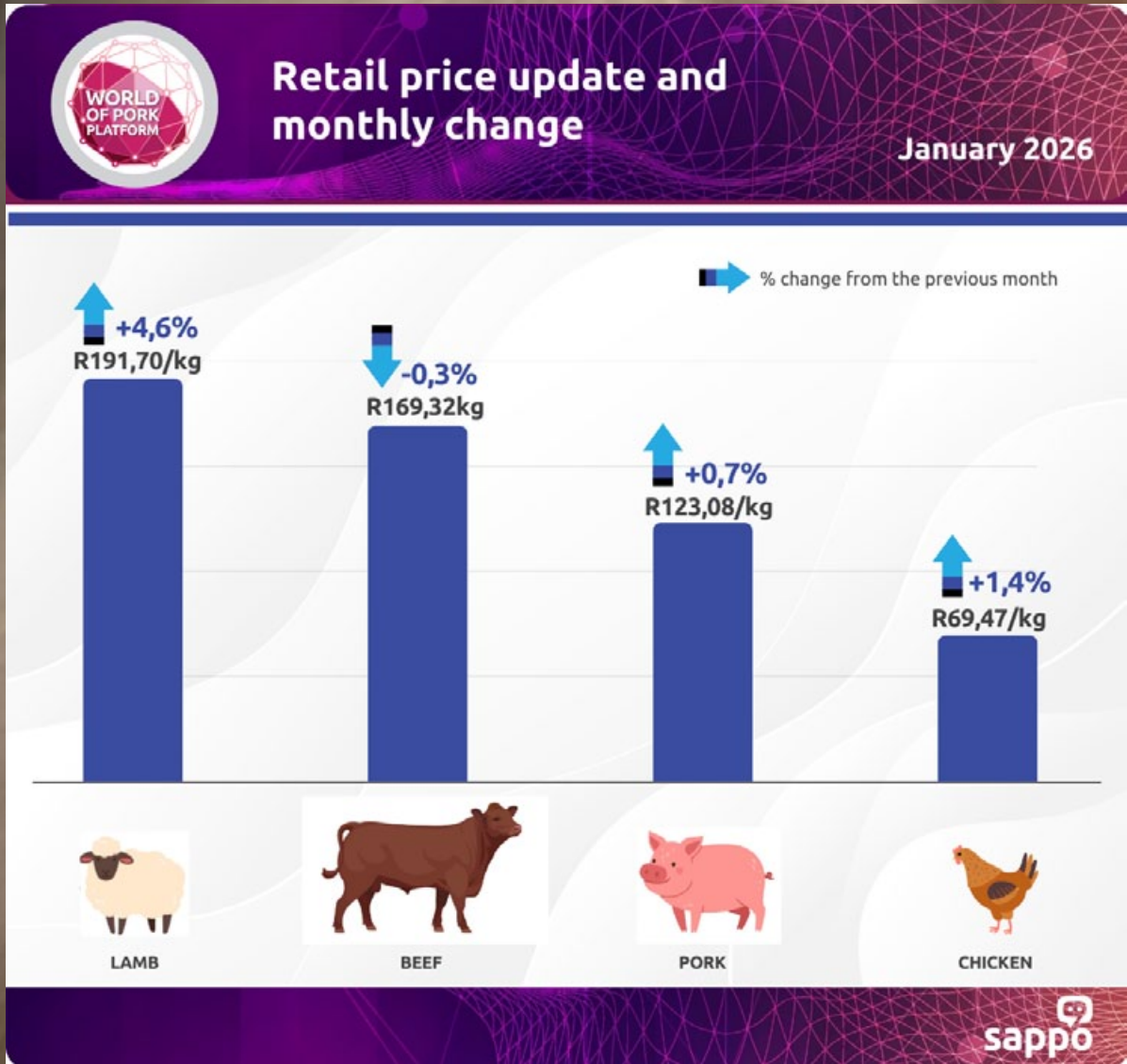
K.A.H./M122A/2024/2

Did you know?



WORLD OF PORK

Retail price update and monthly change: January 2026



©2026. Published by the South African Pork Producers' Organisation (SAPPO). The information provided is for general informational purposes. All information is provided in good faith; however, we make no representation or warranty of any kind, express or implied, regarding the accuracy, adequacy, validity, reliability, availability, or completeness of any information provided for any purpose.

Pork retail prices increased during January 2026.

During January 2026, average retail prices of selected pork products (incl. Bacon products) reached R123,08/kg, 0,7% higher than in December 2025 and 10,4% higher than in January 2025. Monthly retail prices of chicken increased by 1,4%, while beef decreased by 0,3% and lamb increased by 4,6%. Chicken retail prices were on average 3,9% lower in January 2026 compared to January 2025 while beef was 31% higher. Lamb was 14,4% higher over the same period.

[Download report](#)

Auction results



Most Expensive Ram (Lot 22) **R 40 000** Sold to Lloyd Short (Borden Angora Stud) & David Short (Wheatlands Angora Stud)

Highest pen of flock ewes (Lot 101) **R 3 000/EWE** Sold to Kareekrans Bdy from Martyrsford Angora Stud

| ITEM | SOLD | AVERAGE |
|--------------|------|----------|
| RAMS | 77 | R 12 500 |
| STUD | | R 27 400 |
| SELECT FLOCK | | R 17 000 |
| FLOCK | | R 10 300 |
| FLOCK EWES | 95 | R 1 930 |



LTR: Jakkie Nel, Chris Curtain (HOF), Lloyd Short (Borden Angora Stud), Donna Hobson (D & D Angora Stud) and David Short (Wheatlands Angora Stud)

A big thank you to all the buyers and attendees for your incredible support, making this auction a resounding success!



Auction results



VEILING VERSLAG

2BROERS DORMERS & TWE SEUNS SUFFOLKS

30 Januarie 2026 | Barkly-Oos
Afslaer: Jovaan Cloete

Hoogste Prys Ram
Dormer Lot 91

R 53 500

Verkoop aan:
Cherone & Sam Pedro

Hoogste Prys Ram
Suffolk Lot 6

R 48 000

Verkoop aan:
Francois van Rooyen

| ITEM | VERKOOP | GEMIDDELD |
|-------------------|---------|-----------|
| DORMER RAMME | 51 | R 14 029 |
| SUFFOLK RAMME | 63 | R 11 246 |
| DORMER OOILAMMERS | 250 | R 3 176 |
| SUFFOLK OOIE | 43 | R 7 540 |



LNR : Henri Naudé(BKB), Jovaan Cloete(Afslaer),
Sam Pedro, Charone Pedro(Koper), Tjaart
Steenekamp(Eienaar), Karla Steenekamp, Lochner &
Steyn Steenekamp. Hanteerder : Funani Harding



LNR : Jovaan Cloete(Afslaer), Henri Naudé(BKB),
Francois van Rooyen(Koper), Tjaart Steenekamp
(Eienaar, Karla Steenekamp, Lochner & Steyn
Steenekamp. Hanteerder : Andries Harding

Die 2 Broers Dormers & Twee Seuns Suffolk Veiling is deur
BKB Cradock aangebied te plaas Lower Orpendale, Barkly-
Oos. Ons bedank elke koper wat tot die sukses van die
veiling bygedra het.

BKB
LEWENDEHAWE &
AFSLAERSDIENSTE

Auction results



Gemiddelde Veilingspryse Behaal Average Auction prices Achieved

Beespryse / Cattle prices = R.cc/kg

Stoet- en produksieveilings uitgesluit / Stud- and Production auctions excluded

R.cc/kg

Week: 4 Datum/Date: 26-31 Januarie 2026 (excl. VAT)

| | |
|---|-------|
| Tollies / Bull calves < 200kg | 39.22 |
| Tollies / Bull calves 200-250kg | 39.13 |
| Tollies / Bull calves > 250kg | 39.20 |
| Osse / Oxen | 31.78 |
| Bulle / Bulls | 29.38 |
| Verse / Heifers < 200kg | 40.02 |
| Verse / Heifers 200-250kg | 37.92 |
| Verse / Heifers > 250kg | 35.34 |
| Verse Dragtig / Pregnant Heifers | - |
| Skraal koeie / Lean Cows | 26.64 |
| Koeie / Cows | 29.79 |
| Koei Dragtig / Pregnant Cow | 33.64 |
| Koeie + Kalwers / Cows + Calves | 30.81 |
| Koeie + Kalf Dragtig / Pregnant Cows + Calf | - |



BOSVELD TAK 015 491 3141 • potgietersrus@vleissentraal.co.za

WWW.VLEISSENTRAL.CO.ZA



Auction results

NOORD-KAAP
VELDRAM PRIESKA

VEILINGS RESULTATE

5 FEBRUARIE 2026



| ITEM | VERKOOP | GEMIDDELD | DUURSTE |
|----------------|---------|-----------|---------|
| DORPER RAM | 66 | R13 424 | R80 000 |
| WIT DORPER RAM | 24 | R12 333 | R24 000 |
| BOERBOK RAM | 15 | R11 333 | R22 000 |
| VAN ROOY RAM | 17 | R8 764 | R12 000 |

Duurste Dorper ram verkoop deur C Kleinhans aan Armino BK vir R80 000

Duurste Wit Dorper ram verkoop deur JJ Human aan NJ Steyn vir R24 000

Duurste Boerbok ram verkoop deur Leeuput Trust aan NJ Steyn vir R22 000

Duurste Van Rooy ram verkoop deur Armino BK aan JG Stadler vir R12 000

Baie geluk aan beide Kopers en Verkopers!



BEMARKERS STIAAN VON WIELLIGH 082 844 6604
AFLSAER: DANIE STRAUSS 072 585 4028

TERME & VOORWAARDES GELD

Did you know?

Nguni cattle often cost less to maintain while remaining productive under tough conditions.



RECIPE

Cowboy Butter Venison Backstraps



Ingredients:

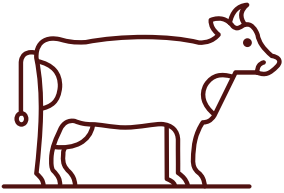
- 1/2 cup (120 ml) unsalted butter (115 grams)
- 1 tablespoon (15 ml) olive oil (15 milliliters)
- 1 tablespoon (15 ml) freshly squeezed lemon juice (15 milliliters)
- 2 cloves garlic, minced
- 1 teaspoon (5 ml) Dijon mustard (5 grams)
- 1/4 teaspoon (1 ml) paprika (0.5 grams)
- 1/8 teaspoon (1 ml) cayenne pepper (0.3 grams)
- 1 tablespoon (15 ml) chopped fresh parsley (15 grams)
- 1 teaspoon (5 ml) chopped fresh chives (5 grams)
- Salt to taste
- Black pepper to taste

Directions:

1. Preheat your grill or stovetop grill pan to medium-high heat.
2. Season the venison backstrap with salt and black pepper on all sides.
3. In a small saucepan, melt the unsalted butter over low heat.
4. Add olive oil to the melted butter and stir to combine.
5. Stir in the minced garlic and cook until fragrant, about 30 seconds.
6. Add the lemon juice, Dijon mustard, paprika, and cayenne pepper to the saucepan and mix well.
7. Remove the saucepan from heat and stir in the chopped parsley and chives.
8. Place the seasoned venison backstrap on the preheated grill.
9. Cook the backstrap for 4-5 minutes on each side, or until it reaches the desired doneness.
10. Remove the venison from the grill and let it rest for 5 minutes.
11. Slice the venison backstrap into thin medallions.
12. Drizzle the cowboy butter sauce over the sliced venison before serving.

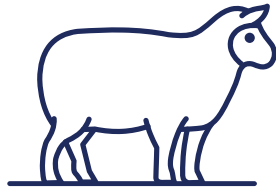
Source: <https://www.facebook.com/share/p/1BHEKXEbq4/>

Wat sê die MARKTE



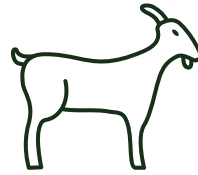
BEES

| | |
|-------------|---------|
| A2/3 = | R 63.57 |
| B2/3 = | R 58.50 |
| C2/3 = | R 56.25 |
| SPEENKALF = | R 39.27 |



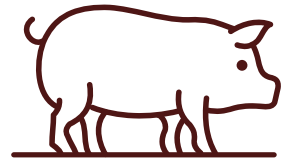
SKAAP

| | |
|------------|---------|
| A2/3 = | R 96.56 |
| B2/3 = | R 74.00 |
| C2/3 = | R 76.25 |
| STOORLAM = | R 51.37 |



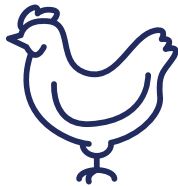
BOKKE

| | |
|----------------|---------|
| Ooie = | R 47.09 |
| Kids <30kg = | R 51.70 |
| Kids 30-40kg = | R 47.41 |
| Kids > 40kg = | R 31.11 |



VARK

| | |
|------------|---------|
| Porkers = | R 40.99 |
| Baconers = | R 40.38 |



PLUIMVEE

| | |
|-----------|---------|
| Bevrose = | R 35.16 |
| Vars = | R 39.43 |
| IQF = | R 35.50 |



SAFEX

| | |
|-------------|-----------|
| Mielies = | R 3545 /t |
| Sojabone = | R 6840 /t |
| Sonneblom = | R 9681 /t |
| Koring = | R 5527 /t |



GELD EENHEDE

| | |
|----------|---------|
| R / \$ = | R 16.13 |
| R / £ = | R 21.94 |
| R / € = | R 19.02 |

Soos 5 Januarie 2025

www.amtrends.co.za



BOERhier VEILINGS

Heavenly Father,

We come before You with humble hearts, acknowledging that everything we have comes from You. Your Word says, "True humility and fear of the Lord lead to riches, honor, and long life" (Proverbs 22:4, NLT). Teach farmers to trust You in every season—when rains come and when fields are dry. Help us to work diligently while surrendering outcomes to Your will. "Humble yourselves under the mighty power of God, and at the right time he will lift you up in honor" (1 Peter 5:6, NLT). Grant wisdom, perseverance, and peace as we steward the land You have entrusted to us. Amen

Lizelle

Dankie dat jy lekker saamgelees het! Stuur hierdie e-tydskrif aan na jou kontakte toe sodat hulle ook deel kan wees van ons familie!